



ELLIOT-BARRY

2008



*A Whole World of Emblematic Jewelry*



- > AWARD PINS > PROMOTIONAL LAPEL PINS
- > AWARENESS AND STOCK PINS > COINS AND MEDALLIONS
- > KEY TAGS > PENDANTS > AND MUCH MORE



# Welcome to Elliot-Barry

With manufacturing facilities in the USA and overseas.

Elliot-Barry has been producing the highest quality emblematic jewelry for over 45 years. Our product line is creative and diverse, designed to meet all budgetary and design needs.



## PRODUCT INDEX

Die-Struck Precious Metal Emblems .....	4 - 5
Deluxe Die-Struck Emblems .....	6 - 7
Ultra Clois & 2-Step Clois-Enamel Emblems .....	8
Etched Enamel Emblems .....	9
Die-Struck Two Toned/Color Filled & Antiqued Emblems .....	10 - 11
Promo Die-Struck Emblems .....	12
Die-Cast Emblems .....	13
Screened Emblems .....	14
Laser Pin Express Emblems (5 - 10 Day Delivery) .....	15
Product Ideas .....	16 - 17
Die-Struck Medallions, Key Tags & Coins .....	18 - 19
Dog Tags .....	20
Pendants .....	21
Wine Charms .....	22
Golf Divot Tools with Custom Magnetic Ball Markers .....	23
Polished Motivational & Recognition Stock .....	24
More Motivational & Recognition Stock .....	25
Patriotic & Inspirational Stock Pins .....	26
Stock Support Ribbons & USA/International Flag Pins .....	27
Other Stock Emblems .....	28
Economy Packaging .....	29
Deluxe Packaging .....	30
General Information .....	31

### Popular dog tags

They're hot. They're hip. Promote your team, organization or ideas. Choose from four top quality processes.

Page 20

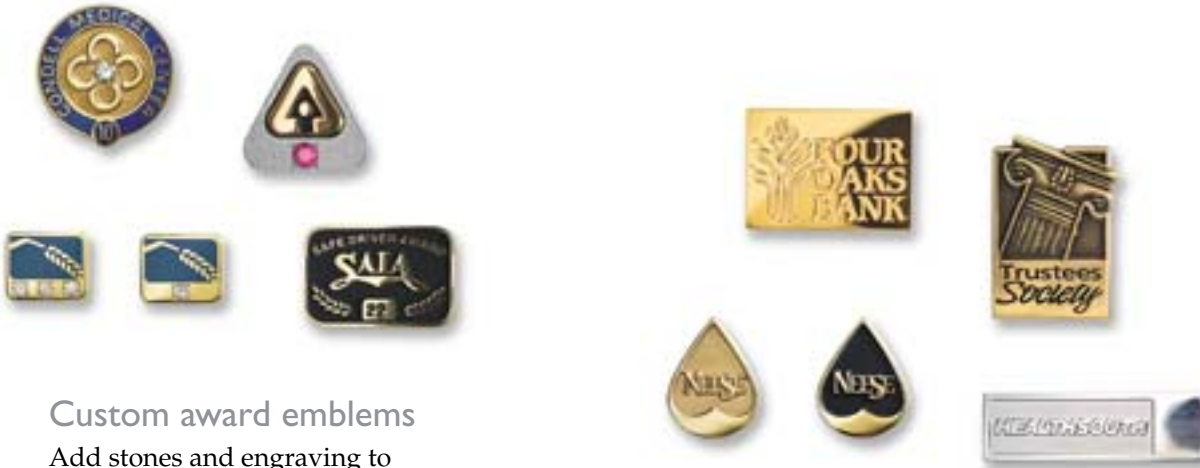


### Popular pendants on leather

Fashionable silver pendants with high quality simulated leather cord. Honor and inspire with your own special message. Stock or custom.

Page 21

# Come to Us for Something Special



## Custom award emblems

Add stones and engraving to make it personal.

Pages 4-7, 10-11, 18-19, 24-25

## Organizational emblems

Corporate, organizational and identification emblems promote team spirit.

Pages 6 - 14



## Promotional emblems

Support trade shows, conventions, products, and special themes with our well-priced styles.

Pages 6 - 28

## Blinky bling

Get more attention by adding a blinking light to your emblems. Your message will really shine through.

Call for details



## Wine charms

Everyone loves these! See our new selection of stock wine charms - or create your own.

Page 22



## For golfers

A fair way to please the corporate golfer. Also an impressive gift.

Page 23





# Die-Struck Precious Metal Emblems



## Achievement and Recognition Awards

- Each emblem is individually hand crafted to perfection using a variety of precious metals including sterling silver, 1/10 10K gold-filled, 10K solid gold and 14K solid gold.
- Each emblem is marked identifying the precious metal used as required by federal government regulations.
- Precious metal emblems provide:
  - An ultimate symbol of achievement.
  - Enduring reminder of accomplishment.

### PRICING

Pricing for precious metal emblems varies significantly based on size and the prevailing market rate of selected precious metal at the date of order. Pricing provided herein is based on metal market rates: **gold - \$750.00/oz., silver - \$14.00/oz.** and sizes of 1/2 inch, 5/8 inch and 3/4 inch. When ordering request updated pricing based on current market rates and actual size (dimension).

Request special quote on 250 pieces or more and for sizes not included here.

Pricing includes deluxe hand polish, sandblast background and a plastic gift box for packaging.

### ADDITIONAL BACKING AND PRODUCT IDEAS

See alternative backing options AND additional product ideas for these emblems on *pages 16 and 17.*

FOR TIE TAC/LAPEL - ITEM 8701;  
CHARM - ITEM 8727; CREST - ITEM 8713:

STERLING SILVER	10	25	50	100
<b>Circle/Oval Shapes</b>	<b>-24</b>	<b>-49</b>	<b>-99</b>	<b>-249</b>
1/2 inch	23.20	14.60	11.80	11.00
5/8 inch	26.00	16.80	13.80	12.80
3/4 inch	29.50	19.40	16.40	15.20

4A

STERLING SILVER	10	25	50	100
<b>Square/Rectangle Shapes</b>	<b>-24</b>	<b>-49</b>	<b>-99</b>	<b>-249</b>
1/2 inch	24.50	15.60	12.80	11.80
5/8 inch	28.00	18.60	15.60	14.40
3/4 inch	32.00	22.20	18.80	17.40

4A

FOR TIE TAC/LAPEL - ITEM 8801;  
CHARM - ITEM 8827; CREST - ITEM 8813:

1/10 10K GOLD-FILLED	10	25	50	100
<b>Circle/Oval Shapes</b>	<b>-24</b>	<b>-49</b>	<b>-99</b>	<b>-249</b>
1/2 inch	29.60	19.80	16.60	15.40
5/8 inch	36.00	24.80	21.20	19.80
3/4 inch	44.00	31.20	27.00	25.40

4A

1/10 10K GOLD-FILLED	10	25	50	100
<b>Square/Rectangle Shapes</b>	<b>-24</b>	<b>-49</b>	<b>-99</b>	<b>-249</b>
1/2 inch	32.50	22.20	18.80	17.40
5/8 inch	41.00	28.80	24.80	23.20
3/4 inch	51.00	37.00	32.20	30.20

4A

# Die-Struck Precious Metal Emblems



FOR TIE TAC/LAPEL - ITEM 8901-T;  
CHARM - ITEM 8927-T; CREST - ITEM 8913-T:

10K SOLID GOLD	10	25	50	100
Circle/Oval Shapes	-24	-49	-99	-249
1/2 inch	83.50	79.50	71.00	64.00
5/8 inch	133.50	114.50	103.00	94.00
3/4 inch	166.00	163.50	147.50	135.00

4C

10K SOLID GOLD	10	25	50	100
Square/Rectangle Shapes	-24	-49	-99	-249
1/2 inch	96.50	93.00	83.00	76.75
5/8 inch	140.00	136.50	123.50	113.00
3/4 inch	197.50	195.00	177.00	162.00

4C

FOR TIE TAC/LAPEL - ITEM 9001-F;  
CHARM - ITEM 9027-F; CREST - ITEM 9013-F:

14K SOLID GOLD	10	25	50	100
Circle/Oval Shapes	-24	-49	-99	-249
1/2 inch	128.00	124.50	112.00	102.50
5/8 inch	191.00	187.50	169.00	155.00
3/4 inch	267.00	263.50	238.50	218.50

4C

14K SOLID GOLD	10	25	50	100
Square/Rectangle Shapes	-24	-49	-99	-249
1/2 inch	190.50	187.50	170.00	155.00
5/8 inch	225.50	222.50	200.50	220.60
3/4 inch	316.00	312.50	284.00	260.00

4C

## SET-UP CHARGES (ONE TIME)

Stamping die: Simple (two level), \$250.00 (G). Complex (multiple level), quoted upon review of art.

Outside trim die: Stock shape, no charge. Custom (irregular) shape, \$225.00 (G).

## ART REQUIREMENTS

Computer generated art required (see page 31 for acceptable formats). If unavailable, \$40.00 (C) art charge applicable.

## PACKAGING

Standard: Plastic gift box (included in emblem price).

Optional: See pages 29 and 30.

## ENAMEL OPTIONS

Standard color fill: Add \$0.60 (A) per color.

Epoxy enamel (like cloisonné): Add \$1.25 (C) per color.

## PREPRODUCTION SAMPLE

\$40.00 (G) and applicable tooling. Two week delivery.

## PRODUCTION SCHEDULE

Order (from art approval) and reorders (from receipt of order): Without stones or enamel: **three to four weeks**.

With stones and/or enamel: **four to five weeks**.

Rush service: Available preauthorized. Inquire for availability and pricing.

## STONES/ENGRAVING

Enhance these recognition and achievement awards through the addition of precious or semi-precious stones and/or engravings.

## ENGRAVING

Engraved into emblem and color-filled

Deep-cut	1-49	50-99	100+
Up to two numerals	1.90	1.40	1.30

3C

Add \$0.50 (C) for each additional character engraved.

## STONES

Synthetic stones (2 - 10 pts.) rubies, sapphires, emeralds, white spinels, \$3.50 (C) each.

Genuine stone (sized in points)	¥01	¥02	¥03	¥04	¥06	¥08
Sapphire-ruby	5.00	5.50	7.00	9.00	10.00	14.00
Emerald	7.50	8.00	9.00	11.00	13.00	17.50
Diamond	12.75	22.50	32.50	42.50	65.00	80.00

6C

Stone pricing based on quantities of 50 pieces or less. Request special quote for larger quantities and for sizes and genuine stones not listed here.



# Deluxe Die-Struck Emblems



## Great Quality at a Great Price

- Very unique product that offers the same look as precious metal at a significant savings.
- 100% manufactured in the USA.
- Create custom award pins by adding stones and/or engravings.
- Several metal finish options available. PMS color matching at no additional charge.

Our deluxe die-struck emblems are individually handcrafted using base metals (copper or brass). Each piece is hand finished and either plated gold or silver or antiqued providing the luster and appeal of fine jewelry.

Deluxe die-struck emblems are priced by finish and provide an excellent option for:

- Recognition and service awards
- Corporate and organizational **identification** pins
- Corporate and organizational **anniversary** pins

### SET-UP CHARGES

**Stamping die:** Simple, \$250.00 (G). Complex, call for quote.  
**Trimming die:** Stock shapes, no charge. Custom shapes, \$225.00 (G).

### PREPRODUCTION SAMPLE

\$40.00 (G) and applicable tooling. Two week delivery.

### PRODUCTION SCHEDULE

**Order (from art approval) and reorders (from receipt of order):** Without stones or enamel: **three to four weeks.**  
 With stones and/or enamel: **four to five weeks.**  
**Rush service:** Available preauthorized. Inquire for availability and pricing.

### ART REQUIREMENTS

Computer generated art required (see page 31 for acceptable formats). If unavailable, \$40.00 (C) art charge applicable.

### PACKAGING

**Standard:** Poly bag (included).  
**Optional:** See pages 29 and 30.

### ADDITIONAL BACKING AND PRODUCT IDEAS

See alternative backing options AND additional product ideas for these emblems on pages 16 and 17.

# Deluxe Die-Struck Emblems



## HIGH-POLISHED TWO-TONED FINISH (GOLD OR NICKEL SILVER)

Details of the logo are raised areas of metal and highly polished with the background sandblasted for a satin finish. Sizes up to one inch.

Two-toned gold or silver finish Attachments	50	100	250	500	1000	2500
	-99	-249	-499	-999	-2499	-4999

67-T military back/ 6727-T charm/ 6713-T flat	7.20	5.40	4.40	3.70	3.30	2.90
6701-T deluxe back/ 6702-T pin back	7.40	5.60	4.60	3.90	3.50	3.10

6A

## HIGH-POLISHED WITH THE ADDITION OF COLOR FILL

Details are raised areas of metal, highly polished with color(s) added to the background. PMS colors available at no charge. Price includes sandblasting, **one color**, and sizes up to one inch. Add \$0.60 (A) for each additional color.

Polished with one color	50	100	250	500	1000	2500
	-99	-249	-499	-999	-2499	-4999

67-X military back/ 6727-X charm/ 6713-X flat	7.80	6.00	5.00	4.30	3.90	3.50
6701-X deluxe back/ 6702-X pin back	8.00	6.20	5.20	4.50	4.10	3.70

6A

## OPTIONS

**Epoxy enamel ("full fill"):** Add \$1.25 (C) to two-toned pricing per color.

## CLASSIC ANTIQUE FINISH

The look of antiquity as this special finish utilizes a barrel finishing process that provides a durable and ageless bronze finish. Sizes up to one inch.

Antique bronze or silver finish Attachments	50	100	250	500	1000	2500
	-99	-249	-499	-999	-2499	-4999

67-A military back	4.40	3.40	2.80	2.10	2.00	1.70
6701-A quality back	4.60	3.60	3.00	2.30	2.20	1.90

6A

Note: Request special quote on quantities of 5,000 or more and for sizes larger than one inch.



## STONES/ENGRAVING

Enhance these recognition and achievement awards through the addition of precious or semi-precious stones and/or engravings.

## ENGRAVING

Engraved into emblem and color filled.

Deep-cut	1-49	50-99	100+
Up to two numerals	1.90	1.40	1.30

3C

Add \$0.50 (C) for each additional character engraved.

## STONES

**Synthetic stones** (2 - 10 pts.) rubies, sapphires, emeralds, white spinels, \$3.50 (C) each.

Genuine stone (sized in points)	¥01	¥02	¥03	¥04	¥06	¥08
Sapphire-ruby	5.00	5.50	7.00	9.00	10.00	14.00
Emerald	7.50	8.00	9.00	11.00	13.00	17.50
Diamond	12.75	22.50	32.50	42.50	65.00	80.00

6C

Stone pricing based on quantities of 50 pieces or less. Request special quote for larger quantities and for sizes and genuine stones not listed here.





# Ultra Clois, 2-Step Clois-Enamel Emblems



**Creative Quality**

**STEP 1** We manufacture a beautiful fine quality die-struck enamel emblem, finished in gold or nickel silver. Raised metal separates each brilliant color.

**STEP 2** We add more colors without metal separating the colors and with close registration even in small details. You get the quality of enamel with the flexibility to duplicate logos.

## Exceptional Quality

- High quality die-struck process.
- Vibrant "full fill" enamel.
- PMS color matching.
- Raised lines of metal must separate Ultra Clois enamel.
- Screen overprinting available when small areas of detail are required to show in color. (See 2-step process below.)
- Metal finishes available: gold, silver or black nickel.

FOR ULTRA CLOIS - ITEM 6801-E;  
FOR 2-STEP ENAMEL - ITEM P70:

Emblem with military back	100	250	500	1000	2500
	-249	-499	-999	-2499	-4999
Up to 3/4 inch	3.60	2.30	2.00	1.70	1.50
7/8 inch	3.80	2.40	2.20	1.90	1.60
1 inch	4.00	2.60	2.30	2.00	1.70
1 1/4 inch	4.80	3.10	2.70	2.40	2.10

Includes up to four colors. Additional colors, \$0.12 (A) each. Size determined by longest dimension. Request special quote on 5,000 pieces or more and for larger sizes.

### 2-STEP ENAMEL PINS

For small areas of detail to show in color, screen overprinting must be done. Pricing is as follows (add to Ultra Clois pricing). **Set-up:** \$40.00 (G) per screen color and \$0.08 (A) per screen color run charge.

### SET-UP CHARGES (ONE TIME)

Ultra Clois die: Up to 1 inch, \$100.00 (G). 1 1/4 inch, \$110.00 (G). (Waived on orders of 1,000 or more; limit one die per order.)

### PRODUCTION SCHEDULE

Order (from art approval) and reorders (from receipt of order): Three to four weeks.

**Rush service:** Available preauthorized. Inquire for availability and pricing.

### ART REQUIREMENTS

Computer generated art required (see page 31 for acceptable formats). If unavailable, \$40.00 (C) art charge applicable.

### PACKAGING

**Standard:** Poly bag (included in emblem price).

**Optional:** See pages 29 and 30.

### PREPRODUCTION SAMPLE

\$70.00 (G) and applicable tooling. Allow three weeks for production.

### LESS THAN MINIMUM CHARGE

For orders less than catalog quantity, add \$50.00 (C); absolute minimum, 50 pieces.

### ADDITIONAL BACKING AND PRODUCT IDEAS

See alternative backing options AND additional product ideas for these emblems on pages 16 and 17.

# Etched Enamel Emblems



## Economical, Ideal for Small Details

- Logo etched into brass metal.
- Slightly thinner metal used – more economical than die-struck emblems.
- PMS color matching.
- Raised lines of metal must separate colors.
- Metal finishes available: gold, silver or black nickel.

Etched enamel with military back	100	250	500	1000	2500
6901-E Up to 3/4 inch	2.70	1.70	1.40	1.10	0.84
7/8 inch	2.80	1.80	1.50	1.20	0.94
1 inch	3.00	1.90	1.60	1.30	1.04
1 1/4 inch	3.30	2.20	1.90	1.60	1.36

5A

Includes up to four colors. Additional colors, \$0.12 (A) each. Size determined by longest dimension. Request special quote on 5,000 pieces or more and for larger sizes. Add \$0.08 (A) for epoxy dome.

### SET-UP CHARGES (ONE TIME)

Die: Up to 1 inch, \$90.00 (G). 1 1/4 inch, \$100.00 (G). (Waived on orders of 1,000 or more; limit one die per order.)

### PRODUCTION SCHEDULE

Order (from art approval) and reorders (from receipt of order): Three to four weeks.

Rush service: Available preauthorized. Inquire for availability and pricing.

### ART REQUIREMENTS

Computer generated art required (see page 31 for acceptable formats). If unavailable, \$40.00 (C) art charge applicable.

### PACKAGING

Standard: Poly bag (included in emblem price).

Optional: See pages 29 and 30.

### PREPRODUCTION SAMPLE

\$70.00 (G) and applicable tooling. Allow three weeks for production.

### LESS THAN MINIMUM CHARGE

For orders less than catalog quantity, add \$50.00 (C); absolute minimum, 50 pieces.

### ADDITIONAL BACKING AND PRODUCT IDEAS

See alternative backing options AND additional product ideas for these emblems on pages 16 and 17.





# Die-Struck Brass Two Toned, Antique, Color Filled



Two Tone

Antique

## Elegant, Classic Look

- High quality die-struck process.
- Brass material.
- Many finishes available, including gold, silver, combination gold/silver, and antique bronze, antique silver or antique gold.

### SET-UP CHARGES (ONE TIME)

Die: Up to 1 inch, \$100.00 (G). 1 1/4 inch, \$110.00 (G).  
(Waived on orders of 1,000 or more; limit one die per order.)

### PRODUCTION SCHEDULE

Order (from art approval) and reorders (from receipt of order): Three to four weeks.

Rush service: Available preauthorized. Inquire for availability and pricing.

### ART REQUIREMENTS

Computer generated art required (see page 31 for acceptable formats). If unavailable, \$40.00 (C) art charge applicable.

### PACKAGING

Standard: Poly bag (included in price).

Optional: See pages 29 and 30.

### PREPRODUCTION SAMPLE

\$70.00 (G) and applicable tooling. Allow three weeks for production.

### LESS THAN MINIMUM CHARGE

For orders less than catalog quantity, add \$50.00 (C); absolute minimum, 50 pieces.

### SANDBLAST TWO TONE

Sandblast emblem with military back	100	250	500	1000	2500
P67-T Up to 3/4 inch	3.00	2.00	1.70	1.40	1.30
7/8 inch	3.20	2.10	1.90	1.50	1.40
1 inch	3.40	2.20	2.00	1.70	1.50
1 1/4 inch	4.00	2.60	2.40	2.00	1.90

Logo text highly polished, background recessed, satin finished.  
Gold or silver finish.

For special silver and gold finish, add \$0.16 (A).

Size determined by longest dimension.

Request special quote on 5,000 pieces or more and for larger sizes.

5A

# Die-Struck Brass Two Toned, Antique, Color Filled



Color Fill  
(up to four colors)

Antique

## Elegant, Classic Look

- PMS color matching.
- Raised lines of metal must separate colors.
- Special colors available: transparent glitter enamels.

### ANTIQUÉ

Antique emblem with military back	100	250	500	1000	2500
	-249	-499	-999	-2499	-4999
P67-A Up to 3/4 inch	3.00	2.00	1.70	1.40	1.30
7/8 inch	3.20	2.10	1.90	1.50	1.40
1 inch	3.40	2.20	2.00	1.70	1.50
1 1/4 inch	4.00	2.60	2.40	2.00	1.90

Antique bronze, gold or silver.  
Great for 3-D designs.  
Includes up to four colors.  
Size determined by longest dimension.  
Request special quote on 5,000 pieces or more and for larger sizes.

5A

### COLOR FILLED

Color-filled emblem with military back	100	250	500	1000	2500
	-249	-499	-999	-2499	-4999
P67-X Up to 3/4 inch	2.70	1.74	1.60	1.20	1.10
7/8 inch	2.90	1.84	1.70	1.30	1.20
1 inch	3.10	2.00	1.84	1.54	1.40
1 1/4 inch	3.60	2.40	2.30	1.90	1.70

5A

Gold or silver finish.  
Includes up to four colors. Additional colors, \$0.12 (A) each.  
Sandblast, add \$0.16 (A).  
Size determined by longest dimension.  
Request special quote on 5,000 pieces or more and for larger sizes.

### FOR RECOGNITION AWARDS

#### ENGRAVING

Up to two numerals deep-cut engraved and color filled.  
Set-up: add \$20.00 (A) per year run charge, add \$0.40 (A) per emblem.

#### STONES

Synthetic stones (rubies, sapphires, emeralds, white spinels) glued in: 2 - 8 pt., \$0.80 (A).

### ADDITIONAL BACKING AND PRODUCT IDEAS

See alternative backing options AND additional product ideas for these emblems on pages 16 and 17.





# Promo Die-Struck Emblems



## Our Lowest Priced Emblems

- High-quality die-struck process.
- Very economical.
- Iron base metal.
- PMS color matching.
- Raised lines of metal must separate colors.
- Metal finishes available: gold, silver or black nickel.

Emblem with military back		250	500	1000	2500	5000
		-499	-999	-2499	-4999	-9999
P66-X	Up to 3/4 inch	1.60	1.30	0.90	0.80	0.76
	7/8 inch	1.80	1.40	1.00	0.84	0.84
	1 inch	2.00	1.50	1.10	0.90	0.90
	1 1/4 inch	2.20	1.70	1.30	1.10	1.10

Includes four colors. Additional colors, \$0.12 (A) each.  
 Size determined by longest dimension.  
 Request special quote on 10,000 pieces or more and for larger sizes.  
 Add \$0.08 (A) for epoxy dome.

### SET-UP CHARGES (ONE TIME)

Die: Up to 1 inch, \$100.00 (G). 1 1/4 inch, \$110.00 (G).  
 (Waived on orders of 1,000 or more; limit one set-up charge per order.)

### PRODUCTION SCHEDULE

Order (from art approval) and reorders (from receipt of order): Three to four weeks.

Rush service: Available preauthorized. Inquire for availability and pricing.

### ART REQUIREMENTS

Computer generated art required (see page 31 for acceptable formats). If unavailable, \$40.00 (C) art charge applicable.

### PACKAGING

Standard: Poly bag (included in price).

Optional: See pages 29 and 30.

### PREPRODUCTION SAMPLE

\$70.00 (G) and applicable tooling. Allow three weeks for production.

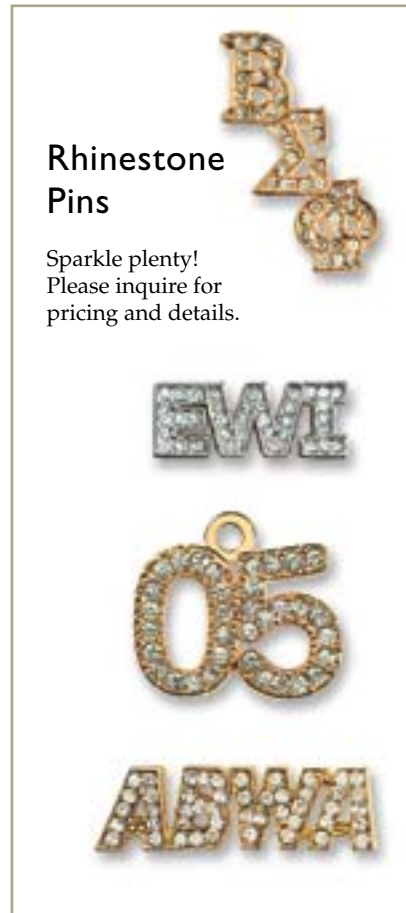
### LESS THAN MINIMUM

For orders less than catalog quantity, add \$50.00 (C); absolute minimum, 100 pieces.

### ADDITIONAL BACKING AND PRODUCT IDEAS

See alternative backing options AND additional product ideas for these emblems on pages 16 and 17.

# Die-Cast Emblems



## Rhinestone Pins

Sparkle plenty!  
Please inquire for pricing and details.

## Great for Dimensional Designs and Cut-Out Letters

- Emblems formed using steel dies and casting process.
- Zinc alloy metal.
- Great for pierced-out designs and cut-out letters.
- PMS color matching.
- Raised lines of metal must separate colors.
- Metal finishes available: gold, silver or antique bronze, silver or gold.

Emblem with military back	100	250	500	1000	2500
P78 Up to 3/4 inch	-249	-499	-999	-2499	-4999
7/8 inch	3.10	1.90	1.80	1.60	1.40
1 inch	3.30	2.00	1.90	1.70	1.60
1 1/4 inch	3.50	2.30	2.20	2.00	1.80

Includes polished gold or silver finish or antique bronze, silver or gold.  
Includes up to four colors. Additional colors, \$0.12 (A) each.  
Size determined by longest dimension.  
Request special quote on 5,000 pieces or more and for larger sizes.

### SET-UP CHARGES (ONE TIME)

Mold (simple): \$125.00 (G).

Complex or three dimensional designs: Quoted upon review of artwork.

### PRODUCTION SCHEDULE

Order (from art approval) and reorders (from receipt of order): Three to four weeks.

Rush service: Available preauthorized. Inquire for availability and pricing.

### ART REQUIREMENTS

Computer generated art required (see page 31 for acceptable formats). If unavailable, \$40.00 (C) art charge applicable.

### PACKAGING

Standard: Poly bag (included in emblem price).

Optional: See optional packaging and pricing on pages 29 and 30.

### PREPRODUCTION SAMPLE

\$70.00 (G) and applicable tooling. Allow three weeks for production.

### LESS THAN MINIMUM

For orders less than catalog quantity, add \$50.00 (C) (less than minimum charge); absolute minimum, 50 pieces.

### ADDITIONAL BACKING AND PRODUCT IDEAS

See alternative backing options AND additional product ideas for these emblems on pages 16 and 17.





# Screened Emblems



## For a Close Registration of Color

- Logo imprinted directly on gold or silver finished metal.
- Logo printed in either spot (Pantone) or four-color process.
- Great option for logos with tight color registration or small areas of detail that must show in color.
- Clear protective epoxy dome included in pricing below.

FOR STANDARD SCREEN PRINT - ITEM P77;  
FOR FOUR-COLOR PROCESS - ITEM P71

Emblem with military back	100	250	500	1000	2500
	-249	-499	-999	-2499	-4999
Up to 3/4 inch	4.00	2.20	1.70	1.10	0.90
7/8 inch	4.10	2.30	1.80	1.20	1.00
1 inch	4.20	2.40	2.00	1.30	1.10
1 1/4 inch	4.60	2.70	2.30	1.60	1.40

Includes up to five colors and a protective epoxy dome.  
Additional colors, \$0.08 (A) each.  
Request special quote on 5,000 pieces or more and for larger sizes.

5A

### SET-UP CHARGES (ONE TIME)

Standard screen process: \$40.00 (G) each color.  
4-color process: \$160.00 (G).  
(Waived on orders of 1,000 units or more.)

### PRODUCTION SCHEDULE

Order (from art approval) and reorders (from receipt of order): Three to four weeks.

Rush service: Available preauthorized. Inquire for availability and pricing.

### ART REQUIREMENTS

Computer generated art required (see page 31 for acceptable formats). If unavailable, \$40.00 (C) art charge applicable.

### PACKAGING

Standard: Poly bag (included in emblem price).

Optional: See optional packaging and pricing on pages 29 and 30.

### PREPRODUCTION SAMPLE

\$70.00 (G) and applicable tooling. Allow three weeks for production.

### LESS THAN MINIMUM CHARGE

Not available.

### ADDITIONAL BACKING AND PRODUCT IDEAS

See alternative backing options AND additional product ideas for these emblems on pages 16 and 17.

PROUDLY  
AMERICAN  
MADE

# Laser Pin Express Emblems



1 1/8" oval

7/8" oval

1" round

7/8" round

3/4" round

## Stock shapes



1 1/8" rectangle

7/8" rectangle

1" square

3/4" square

**Ships in 5 to 10 Working Days!**  
**Up to 8 Colors**

Here's a new digital process that's ideal when you need good quality lapel pins very fast and very affordably. Choose from nine stock shapes listed above. An epoxy dome can be added to this process.

Emblem with military back	100	250	500	1000	2500
	-249	-499	-999	-2499	
66-BH Up to 1 1/8 inch	3.30	2.80	2.20	1.80	1.70

5A

**SET-UP CHARGES (INITIAL ORDER ONLY)**  
Stock shapes (listed above): \$65.00 (G).

**BACKING AND IMPRINT**  
Includes military back and up to eight colors printed on satin brass emblem.

## ART REQUIREMENTS

Computer generated art required (see page 31 for acceptable formats). If unavailable, \$40.00 (C) art charge applicable.

## PRODUCTION SCHEDULE

**Order (from art approval):** Five to ten working days.  
**Quantities of 5,000 pieces or more:** Inquire for production time.

## OPTIONS

**Epoxy dome:** Add \$0.30 (A) plus an additional five working days for delivery.

## PACKAGING

**Standard:** Poly bag (included in emblem price).  
**Optional:** See optional packaging and pricing on pages 29 and 30.

## PREPRODUCTION SAMPLE

\$40.00 (G) plus set-up charges; allow an additional five days for delivery.

## LESS THAN MINIMUM CHARGE

For orders less than catalog quantity, add \$50.00 (C); absolute minimum, 50 pieces.





# Product Ideas



Ball Marker,  
BALL MARKER, add \$0.20 (C)  
to selected emblem pricing



Wine Charms,  
see pricing  
on page 22.

Zipper Pull,  
10, add \$0.10 (C)  
to selected emblem pricing



Sterling Silver Cuff Backing,  
add \$15.00 pair (C)  
Gold-Filled Cuff Backing,  
add \$20.00 pair (C)  
to selected emblem pricing

Gold-Filled Pendant Charm,  
PEND-GF, add \$30.00 (C)  
to selected emblem pricing



Cufflinks NEW  
add \$2.00 (C)  
to selected emblem pricing

Gold or Silver  
Tone Neck Chain,  
NECKCHAIN,  
add \$2.50 (C)  
to selected emblem pricing



Deluxe Two-Toned Cuff Link Backs,  
bullet style, DLXCUFF-EP,  
add \$13.00 (C)  
to selected emblem pricing



Pierced Earrings  
(Surgical Steel Wire),  
124A, add \$0.20 pair (C)  
to selected emblem pricing

Twist Lock Key Fob,  
22, add \$2.70 (C)  
to selected emblem pricing



Military (Butterfly) Clutch,  
Included with emblems.  
For additional clutch back,  
add \$0.10 (A)  
to selected emblem pricing

Quality Clutch,  
add \$0.40 (A)  
to selected emblem pricing  
(add suffix -01 to selected  
emblem item #)



Quality Clutch Bar and Chain,  
add \$1.50 (A)  
to selected emblem pricing  
(add suffix -01 chain to selected  
emblem item #)



Flat Clutch,  
add \$0.36 (A)  
to selected emblem pricing  
(add suffix -01 fit to selected  
emblem item #)



1 piece Pinback,  
add \$0.30 (A)  
to selected emblem pricing  
(add suffix -02 to selected  
emblem item #)



Magnet Back Import,  
1 piece, add \$0.20 (A)  
2 piece, add \$0.40 (A)  
Magnet Back Domestic,  
2 piece, add \$1.00 (A)  
to selected emblem pricing  
(add suffix -MB to selected  
emblem item #)



Double Sided Tape,  
add \$0.10 (A)  
to selected emblem pricing  
(add suffix -DT to selected  
emblem item #)



Stick Pin,  
add \$0.90 (A)  
to selected emblem pricing  
(add suffix -DT to selected emblem item #)



Rubber Back,  
add \$0.06 (A)  
to selected emblem pricing  
(add suffix -RBR to selected  
emblem item #)

# Product Ideas



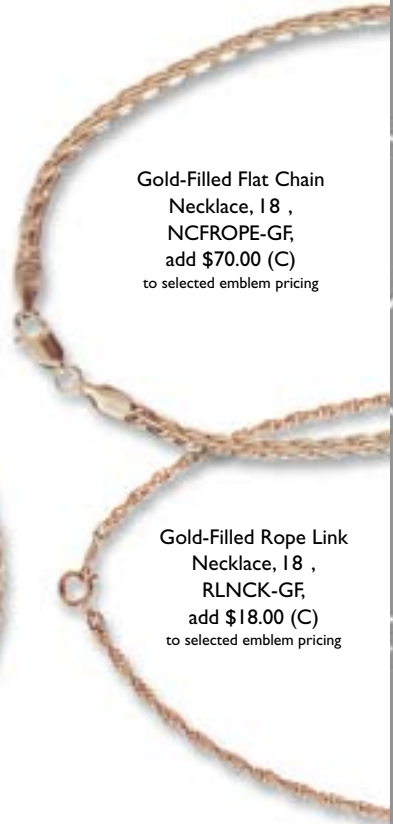
Sterling Charm Bracelet, 7 ,  
SSBRCCHRM,  
add \$22.50 (C)  
to selected emblem pricing

Sterling Figaro Charm Bracelet, 7 ,  
SSBRCFIG,  
add \$33.00 (C)  
to selected emblem pricing



Gold-Filled Charm Bracelet, 7 ,  
GFBRCCHRM,  
add \$66.00 (C)  
to selected emblem pricing

Gold-Filled Rope Charm Bracelet, 7 ,  
RLBRC-GF,  
add \$12.00 (C)  
to selected emblem pricing



Gold-Filled Flat Chain Necklace, 18 ,  
NCFROPE-GF,  
add \$70.00 (C)  
to selected emblem pricing

Gold-Filled Rope Link Necklace, 18 ,  
RLNCK-GF,  
add \$18.00 (C)  
to selected emblem pricing

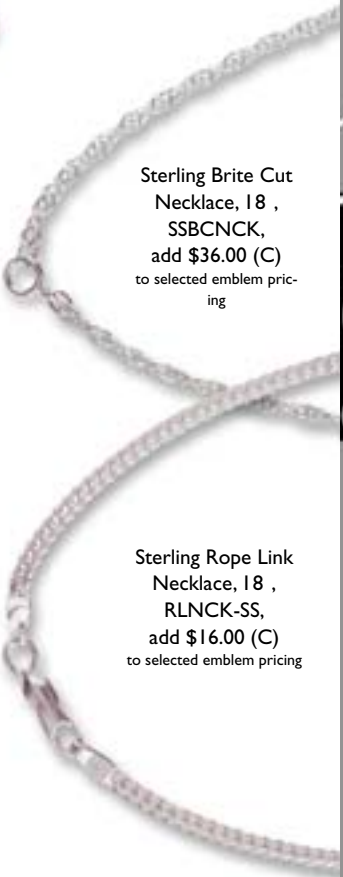
Card Case, CASE-EP,  
add \$20.00 (C)  
to selected emblem pricing



Money Clip, gold tone scalloped, SCALMC-EP,  
add \$25.00 (C)  
to selected emblem pricing



Front Pocket Wallet, brown leather with hinged money clip,  
add \$24.00 (C)  
to selected emblem pricing



Sterling Brite Cut Necklace, 18 ,  
SSBCNCK,  
add \$36.00 (C)  
to selected emblem pricing

Sterling Rope Link Necklace, 18 ,  
RLNCK-SS,  
add \$16.00 (C)  
to selected emblem pricing





# Die-Struck Medallions, Key Tags, Coins



Coin stand



Swivel,  
add \$0.20 (A)



Granada  
ring,  
add  
\$0.40 (A)



Bright chain,  
add \$0.16 (A)

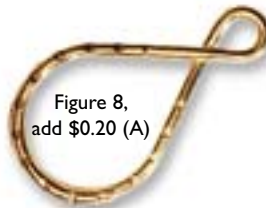






Figure 8,  
add \$0.20 (A)

## METAL THICKNESS

Available thickness options are noted in the pricing grid. Refer to illustration below for size reference. Inquire for availability and pricing of other metal thicknesses.

			
1.6 mm (14 gauge)	2.1 mm (12 gauge)	2.6 mm (10 gauge)	3.2 mm (8 gauge)

## COIN STAND

See price grid for extra color charge.  
PMS color matching available, add \$1.60 (C).

## RIBBONS

Neck and drape ribbons available in the following stock colors: red, blue, red/white/blue, yellow/white, black, white. Special colors, sizes, designs quoted upon request.

**Neck ribbons:** 7/8 inch x 30 inch, V-cut, add \$1.00 (C).  
**Drape ribbons:** Add \$0.80 (C).

## Item Codes

Medallions	P1627
Coins	P1613
Key Tags: Dual Loop	P1611
Key Tags: Figure 8	P1621
Key Tags: Granada	P1643

Specify finish with item code extensions.  
Gold or silver: -T. Antique: -A. Color fill: -X.

# Die-Struck Medallions, Key Tags, Coins



Note: For sizes 2 inches or more, request pricing using die-cast process also.

Die-striking in brass offers the highest quality in appearance and durability

- One-sided coin, medallion or key tag with 3 mm split ring included in pricing.
- Two-dimensional design.
- Up to four colors.
- Gold, silver (two tone) or bronze finish.

	Quantity			Add for		TOOLING	
	100	250	500	2nd side	3-D effect	2-D Die	3-D Die
	-249	-499	-999				
<b>1 1/4 inch</b>							
1.6 mm thick	3.40	2.80	2.50	n/a	0.34	120.00	190.00
2.1 mm thick	4.00	3.40	3.00	0.30	0.34	120.00	190.00
<b>1 1/2 inch</b>							
2.1 mm thick	4.80	4.10	3.70	n/a	0.40	130.00	200.00
2.6 mm thick	5.50	4.80	4.40	0.36	0.40	130.00	200.00
<b>1 3/4 inch</b>							
2.1 mm thick	6.10	5.30	4.90	n/a	0.44	150.00	250.00
2.6 mm thick	7.10	6.20	5.70	0.40	0.44	150.00	250.00
<b>2 inch</b>							
2.1 mm thick	7.30	6.40	5.90	n/a	0.54	175.00	360.00
2.6 mm thick	8.40	7.40	6.80	0.50	0.54	175.00	360.00
			3A	A	A	G	G

### SPECIAL SIZES, LARGER QUANTITIES

Request special quote on sizes larger than 2 inches and quantities of 1,000 pieces or more.

### TWO-SIDED COINS, MEDALLIONS AND KEY TAGS CHARGES

Varies by size. See "Add for 2nd side" column on unit pricing grid. Additional die charge applicable.

### 3-D DESIGN CHARGES

Varies by size. See "Add for 3-D effect" column on unit pricing grid. Additional die charge applicable.

### SPECIAL ANTIQUE SILVER (PEWTER) OR ANTIQUE GOLD FINISH

Add \$0.20 (A).

### EPOXY DOME

Add \$0.12 (A) per side.

### CONSECUTIVE NUMBERING

Engraved: \$0.12 (A).

Laser engraved: \$0.08 (A).

### TOOLING CHARGES

Varies by size and art. See "Die" columns on unit pricing grid.

### PRODUCTION SCHEDULE

Four to five weeks from approval of artwork.

### PACKAGING

**Standard:** Individually poly-bagged.

**Optional:** See optional packaging and pricing on pages 29 and 30.

### PREPRODUCTION SAMPLE

\$70.00 (G) and applicable tooling. Allow three weeks for production.

### LESS THAN MINIMUM CHARGE

Inquire about availability.





# Dog Tags



## Dog Tags

- Four unique options available.
- 30 inch bead chain included.
- Promote your event, club, school or organization.

Dog tags	100	250	500	1000	Die per side	2nd side
	-249	-499	-999	-2499		
SDT-A Screen print on aluminum, silver finish	2.70	2.50	2.20	1.90	per color 40.00	0.24
SDT-B Screen print on brass, gold finish	4.00	3.80	3.40	3.00	per color 40.00	0.24
EDT Etched enamel, gold or silver finish	3.70	3.50	3.10	2.80	120.00	0.30
DDT Promo die struck, gold or silver finish	4.00	3.80	3.40	3.10	150.00	0.40
				4A	G	A

Includes up to four colors. Additional colors, \$0.12 (A) each. Size is 2 inches x 1 1/4 inches. Request special quote for larger or smaller sizes.

### RUBBER GUARD

Add \$0.32 (A) each.

### SET-UP CHARGES

Varies by process. See "Die" column on unit pricing grid.

### PRODUCTION SCHEDULE

Order (from art approval) and reorders (from receipt of order): Three to four weeks.

**Rush service:** Available preauthorized. Inquire for availability and pricing.

### PACKAGING

Poly bag (included).

### PREPRODUCTION SAMPLE

\$40.00 (G) and applicable tooling. Allow two weeks for production.

# Pendants with a Message



Upgraded simulated leather cord

## Stock Pendants

- Inspire.
- Express solidarity.

Stock		50 -99	100 -249	250 -499	500+
Pen ribb	Courage ribbon	2.00	1.70	1.50	1.20
Pen ribb2	2-piece pendant	3.00	2.70	2.50	2.20

4A

### IN STOCK

Ship in two to three business days.

### PACKAGING

**Standard:** Poly bag.

**Optional:** See optional packaging and pricing on pages 29 and 30.

## Custom Pendants

- Die-cast silver plated with black enamel color fill.
- 20-inch simulated leather cord.
- Imprint company, school or organization name.
- Back side can be imprinted also.

Custom		100 -249	250 -499	500 -999	1000+
One side	Up to 1 inch	2.30	2.10	1.70	1.60
Two sides	Up to 1 inch	2.60	2.40	2.00	1.90

4A

Includes simulated leather cord.

### DIE CHARGES (ONE TIME)

**One side:** \$150.00 (G).

**Two sides:** \$180.00 (G).

### PRODUCTION SCHEDULE

**Art production:** Allow two to five days depending on quality and complexity.

**Order (from art approval) and reorders (from receipt of order):** Three to four weeks.

### PACKAGING

**Standard:** Poly bag.

**Optional:** See optional packaging and pricing on pages 29 and 30.





# Wine Charms



86WC-1



86WC-3



86WC-2



86WC-6



86WC-5



86WC-4

## STOCK WINE CHARMS

In stock, ready to ship. Sold as shown.

Stock	50 -99	100 -249	250 -999	1000
86WC-___	2.80	2.10	1.90	1.60

4A

Size up to 3/4 inch.

Includes wine glass charm ring.

Color beads, \$0.16 (A) for two beads. Bead colors available: clear, red, blue, green purple and yellow.

Wine charms can also be sold in sets. Quantities of different charms can be combined for pricing.

## PACKAGING

Standard: Individually poly-bagged.

Optional: See pages 29 and 30.



## CUSTOM WINE CHARMS

Custom wine charms can be produced using almost all processes shown throughout our catalog. Pricing for more popular processes for producing custom wine charms is shown below. Metal finished in gold or nickel silver plating.

Custom	100 -249	250 -499	500 -999	1000 -2499	2500
P77-WC Screen print	4.40	2.50	2.10	1.40	1.20
P69-WC Etched and color filled	3.10	2.00	1.70	1.40	1.20
P67-WC Die-struck two toned	3.50	2.30	2.10	1.80	1.60

5A

Size up to 7/8 inch.

Includes wine glass charm ring.

Color beads, \$0.16 (A) for two beads. Bead colors available: clear, red, blue, green purple and yellow.

Wine charms can also be sold in sets. Quantities of different charms can be combined for pricing.

Request special quote on larger sizes.

## SET-UP CHARGES (TOOLING)

Screen print: \$40.00 (G) each color.

Etched and color filled: \$90.00 (G).

Die-struck two toned: \$100.00 (G).

## PRODUCTION SCHEDULE

Order (from art approval) and reorders (from receipt of order): Three to four weeks.

Rush service: Available preauthorized. Inquire for availability and pricing.

## ART REQUIREMENTS

Computer generated art required (see page 31 for acceptable formats). If unavailable, \$40.00 (C) art charge applicable.

## PACKAGING

Standard: Poly bag.

Optional: See pages 29 and 30.

## PREPRODUCTION SAMPLE

\$70.00 (G) and applicable tooling. Allow three weeks for production.

# Golf Divot Tools with Custom Magnetic Ball Markers



Custom ball markers

Antique silver

Antique bronze

## CUSTOM BALL MARKERS WITH NIB BACKING

Finishes: Polished gold or nickel silver, or antiqued in bronze or silver.

Die-struck	100	250	500	1000	2500
	-249	-499	-999	-2499	
P66-BM Up to 3/4 inch	2.30	1.60	1.30	1.10	1.00

5A

Includes up to four colors.

## SET-UP CHARGES (ONE TIME)

Die: \$100.00 (G).

## PRODUCTION SCHEDULE

**Art production:** Allow two to five days depending on quality and complexity.

**Order (from art approval) and reorders (from receipt of order):** Three to four weeks.

**Rush service:** Available preauthorized. Inquire for availability and pricing.

## ART REQUIREMENTS

Computer generated art required (see page 31 for acceptable formats). If unavailable, \$40.00 (C) art charge applicable.

## DIVOT TOOLS WITH CUSTOM MAGNETIC BALL MARKERS

Divot tool finishes: Gold, nickel silver, or antiqued in bronze or silver.

Ball marker finishes: Antiqued in bronze, silver, or gold.

Brass	50	100	250	500	1000
	-99	-249	-499	-999	
P66-Divot tool					
Die-struck ball marker with divot tool	7.80	6.50	5.30	4.70	4.20
P77-Divot tool					
Screen print ball marker with divot tool	8.70	7.80	6.00	5.20	4.60

5A

Includes up to four colors.

Additional colors, \$0.12 (A) each.

## SET-UP CHARGES

Die-struck ball marker: \$100.00 (G).

Screen print ball marker: \$40.00 (G) each color.

## OPTIONS

**Epoxy dome:** Included in screen print pricing.

For die-struck ball marker, add \$0.08 (A).





# More Motivational/Recognition Stock



## Antique



## Key Tags



### GENERAL INFORMATION

Pins sold as shown. In some cases optional finishes are available. Please inquire. Please also request special pricing and production schedule for larger quantities than priced below.

Antique	25 -49	50 -99	100 -499	500 -999	1000
---------	-----------	-----------	-------------	-------------	------

Die-struck antique	3.00	2.50	1.80	1.60	1.50
--------------------	------	------	------	------	------

5A

Jeweled	25 -49	50 -99	100 -499
---------	-----------	-----------	-------------

Die-struck with color	3.50	2.80	2.40
-----------------------	------	------	------

3A

Custom jeweled award pins available. Call for quote.

Key tags	25 -49	50 -99	100 -499	500 -999	1000
----------	-----------	-----------	-------------	-------------	------

Die-struck antique	3.30	2.90	2.10	1.80	1.60
--------------------	------	------	------	------	------

5A

Guard pins	25 -49	50 -99	100 -499
------------	-----------	-----------	-------------

1/20 10K gold-filled	24.00	18.00	14.00
----------------------	-------	-------	-------

3A

### PACKAGING

Poly bag.

### DELIVERY

In most cases orders can ship in one to three business days from receipt of order. Check availability when ready to place an order.



## Jeweled

## Guard Pins





# Patriotic and Inspirational Stock



Special! American flag pin



Patriotic ribbons and flags



Symbols of patriotism and inspiration



## GENERAL INFORMATION

Pins sold as shown. In some cases optional finishes are available. Please inquire. Please also request special pricing and production schedule for larger quantities than priced here.

Patriotic ribbons and flags	25	50	100	500	1000
	-49	-99	-499	-999	
	3.00	2.40	1.70	1.20	1.00

5A

American flag pin	25	50	100	500	1000
	-49	-99	-499	-999	
	2.00	1.80	1.00	0.80	0.70

5A

Patriotism and inspiration	25	50	100	500	1000
	-49	-99	-499	-999	
	3.30	2.50	1.80	1.60	1.50

5A

Inspirational items	25	50	100	500	1000
	-49	-99	-499	-999	
	3.40	3.00	2.30	2.20	2.00

5A

## PACKAGING

Poly bag.

## DELIVERY

In most cases orders can ship in one to three business days from receipt of order. Check availability when ready to place an order.

Inspirational items



# Stock Support Ribbons and USA/International Flag Pins



State and international flags

## GENERAL INFORMATION

Pins sold as shown. In some cases optional finishes are available. Please inquire. Please also request special pricing and production schedule for larger quantities than priced here.

State and international flags	25 -49	50 -99	100 -499	500 -999	1000
	2.40	2.20	1.40	1.00	0.90

5A

Ribbons for good causes	25 -49	50 -99	100 -499	500 -999	1000
	3.30	2.60	2.00	1.60	1.40

5A

## PACKAGING

Poly bag.

## DELIVERY

In most cases orders can ship in one to three business days from receipt of order. Check availability when ready to place an order.



Ribbons for good causes





# Other Stock Emblems



### GENERAL INFORMATION

Pins sold as shown. In some cases optional finishes are available. Please inquire. Please also request special pricing and production schedule for larger quantities than priced below.

Stock emblem with military back	25 -49	50 -99	100 -499	500 -999	1000
	3.30	2.50	1.80	1.60	1.50

5A

### PACKAGING

Poly bag.

### DELIVERY

In most cases orders can ship in one to three business days from receipt of order. Check availability when ready to place an order.

# Economy Packaging



## IMPRINTED CARDS

Imprinted cards are excellent for reaffirming or expanding the message of your lapel pin. Many options are available.

**Inquire with your specifications, and we will provide pricing.**

## SUEDE POUCHES

for pins and accessories 2 x 3



		<500	500 -2499	2500
166G	Green	0.60	0.55	0.50
166BLCK	Black	0.60	0.55	0.50
166RB	Royal Blue	0.60	0.55	0.50
166R	Red	0.60	0.55	0.50
3C				

## PLASTIC GIFT BOXES

with foam liners



		<500	500 -2499	2500
Small box 1.25 x 1.25"				
173BLCK	black	0.60	0.55	0.50
173BL	dark blue	0.60	0.55	0.50
Medium box 1.625 x 2.125"				
174BLCK	black	0.70	0.65	0.55
Large box 2.875 x 2"				
177BLCK	black	0.90	0.85	0.75
Extra large box 4.625 x 3.5"				
178BLCK	black	2.75	2.55	2.45
3C				





# Deluxe Packaging



## LEATHERETTE BOXES 1.75 x 1.5

		<100	100 -499	500
176DG	Dark grey	4.50	4.00	3.75
176LG	Light grey	4.50	4.00	3.75

3C

## SUPREME VELVET GIFT BOXES

		<100	100 -499	500
Small box 1.8 x 2.125"				
167BLCK	black	2.30	2.10	1.70
167BL	blue	2.30	2.10	1.70
167LG	grey	2.30	2.10	1.70
Large box 3.375 x 2.625"				
168BLCK	black	2.85	2.60	2.30
168BL	blue	2.85	2.60	2.30

3C



## 2-PIECE CARDBOARD BOXES

		<500	500 -2499	2500	
170BLCK	black	2.625 x 1.625"	0.95	0.85	0.80
170BL	blue	1.875 x 1.875"	0.95	0.85	0.80
170W	white	2.625 x 1.625"	0.95	0.85	0.80

3C



### IMPRINTING OPTION

(Available on all package options except plastic boxes)

Method: Foil stamp, all standard colors available.

### SET-UP CHARGES (ONE TIME)

\$70.00 (G).

### ART REQUIREMENTS

Computer generated art required (see page 31 for acceptable formats). If unavailable, \$40.00 (C) art charge applicable.

### RUNNING CHARGE (PER IMPRINT)

Less than 50: \$0.50 (A).  
50 or more: \$0.30 (A).

# General Information



## CREATIVE DESIGN SERVICES

Translating a trademark or logo into a beautiful piece of jewelry may require the assistance of a skilled artist to create and design an idea. Our factory's art department can transform a client's logo into an effective jewelry design, from instructions and suggestions by the client.

Black-and-white layout, \$40.00 (C).

Computer-generated colored art, \$60.00 (C).

## COMPUTER GENERATED ART

Computerized art is accepted via email or disk. In addition to the disk or email, we require a hard copy of the art. Preferred file and format types are CorelDRAW®.cdr or Adobe® Illustrator®.ai or .eps. Bitmap files are acceptable but subject to additional art charge of \$40.00 (C). Fonts must be included unless type is converted to curves or outlines.

## OVERRUNS/UNDERRUNS

All custom products manufactured are subject to a 5% overrun or underrun. The exception to this is our precious metals. Every effort will be made to ship exact quantities on all other products. If an exact quantity is mandatory, it must be specified when the order is placed.

## TOOLING COSTS

The tooling costs quoted in this catalog represent the cost for a simple design. Oversized and sculptured dies or molds will be quoted by the factory after artwork is reviewed. All tooling is billed at factory cost and shall remain property of Elliot-Barry Company. All domestic dies and molds will be kept on file for a period of five years. Tooling for imported emblems will be maintained for a period of three years.

## TERMS

Inquire for details.

## SHIPPING

All shipments are F.O.B. Colorado factory and routed via UPS unless otherwise specified. Shipments are prepaid and normally invoiced at the time of shipment.

## TRADEMARKS

Elliot-Barry assumes distributors are authorized to use trademarks presented for reproduction. We assume no liability in trademark or copyright disputes.

## PRICES

This catalog supersedes previous catalogs and price lists. The factory reserves the right to correct pricing errors in the catalog.

Pricing is based on current market rates of metals used to produce emblematic products. Precious metals fluctuate directly with prevailing market rates at date of order. See explanation of pricing fluctuations on pages 4-5. Emblems produced in non-precious metals are priced at the present market rates of brass and copper. Historically the cost of these metals has been stable. However, in the past year a significant increase in market price has been experienced as demand of metals has exceeded supply. If market pricing for these metals continues to increase at a significant rate, the factory reserves the right to adjust pricing during the year to reflect the increase in raw materials cost.

CorelDRAW® is a registered trademark of Corel Corporation or Corel Corporation Limited in Canada, the United States and/or other countries. Adobe® and Illustrator® are registered trademarks of Adobe Systems Incorporated in the United States and/or other countries.



asi 51940



member 113932



Universal Promotional Identification Code  
elliottb



[www.elliottbarry.com](http://www.elliottbarry.com)

