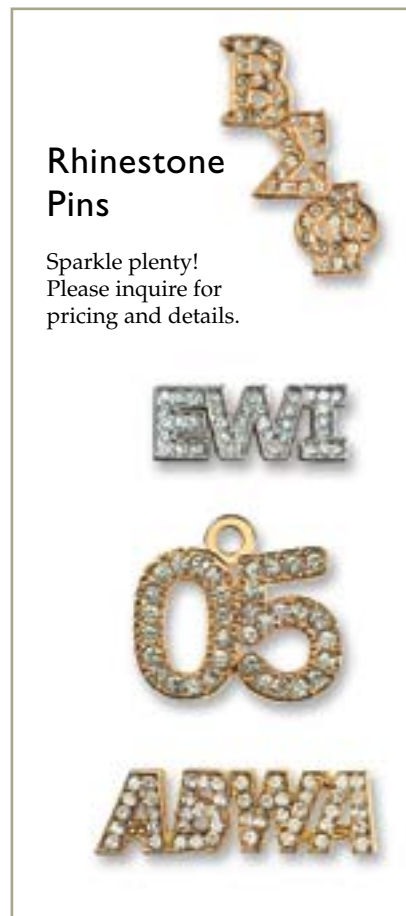


Die-Cast Emblems



Rhinestone Pins

Sparkle plenty!
Please inquire for pricing and details.

Great for Dimensional Designs and Cut-Out Letters

- Emblems formed using steel dies and casting process.
- Zinc alloy metal.
- Great for pierced-out designs and cut-out letters.
- PMS color matching.
- Raised lines of metal must separate colors.
- Metal finishes available: gold, silver or antique bronze, silver or gold.

Emblem with military back	100	250	500	1000	2500
P78 Up to 3/4 inch	-249	-499	-999	-2499	-4999
7/8 inch	3.10	1.90	1.80	1.60	1.40
1 inch	3.30	2.00	1.90	1.70	1.60
1 1/4 inch	3.50	2.30	2.20	2.00	1.80

Includes polished gold or silver finish or antique bronze, silver or gold.
Includes up to four colors. Additional colors, \$0.12 (A) each.
Size determined by longest dimension.
Request special quote on 5,000 pieces or more and for larger sizes.

SET-UP CHARGES (ONE TIME)

Mold (simple): \$125.00 (G).

Complex or three dimensional designs: Quoted upon review of artwork.

PRODUCTION SCHEDULE

Order (from art approval) and reorders (from receipt of order): Three to four weeks.

Rush service: Available preauthorized. Inquire for availability and pricing.

ART REQUIREMENTS

Computer generated art required (see page 31 for acceptable formats). If unavailable, \$40.00 (C) art charge applicable.

PACKAGING

Standard: Poly bag (included in emblem price).

Optional: See optional packaging and pricing on pages 29 and 30.

PREPRODUCTION SAMPLE

\$70.00 (G) and applicable tooling. Allow three weeks for production.

LESS THAN MINIMUM

For orders less than catalog quantity, add \$50.00 (C) (less than minimum charge); absolute minimum, 50 pieces.

ADDITIONAL BACKING AND PRODUCT IDEAS

See alternative backing options AND additional product ideas for these emblems on pages 16 and 17.

