




# Elliot - Barry

Defining the impact of emblematic jewelry

**em•blem** *symbolic object that identifies, represents*


**re•ward**  *give recognition of service, accomplishment*

**re•cog•nize**  *show official appreciation; reward formally*

**in•spire**  *motivate someone with passion*

**en•cour•age**  *give hope, confidence; stimulate*

**cel•e•brate**  *honor or praise publicly*

**pro•mote**  *give publicity to; increase awareness*

**ap•pre•ci•ate**  *value, regard highly*

**com•mem•or•ate**  *remember and show respect for*

2011



**PRODUCT INDEX**

Die-Struck Precious Metal Emblems \_\_\_\_\_ 4-5  
 Deluxe Die-Struck Emblems \_\_\_\_\_ 6-7  
 Ultra Clois & 2-Step Clois-Enamel Emblems \_\_\_\_\_ 8  
 Etched Enamel Emblems \_\_\_\_\_ 9  
 Die-Struck Two Toned/Color Filled & Antiqued Emblems \_\_\_\_\_ 10-11  
 Promo Die-Struck Emblems \_\_\_\_\_ 12  
 Die-Cast Emblems \_\_\_\_\_ 13  
 Screened Emblems with Epoxy Dome \_\_\_\_\_ 14  
 Laser Pin Express Emblems (5 - 10 Day Ship) \_\_\_\_\_ 15  
 Product Ideas Using Emblematic Jewelry \_\_\_\_\_ 16-19  
 Die-Struck Medallions, Key Tags & Coins \_\_\_\_\_ 20-21  
 Stock Emblems \_\_\_\_\_ 22-23  
 Flexible PVC Products \_\_\_\_\_ 24  
 Economy Packaging \_\_\_\_\_ 25  
 Deluxe Packaging \_\_\_\_\_ 26-27  
 General Information \_\_\_\_\_ 28

FOR OVER 50 YEARS, ELLIOT-BARRY HAS BEEN PRODUCING BY HAND — in the United States — the highest-quality emblematic jewelry. Our product line is both creative and diverse, and continues to grow every day. Elliot-Barry constantly searches the globe for new ideas, new processes, and the best prices for our promotional emblems. We invite you to review our new offerings for 2011.

Emblematic jewelry has many applications throughout the spectrum of recognition and promotion. We invite you to review some of the most popular uses of our products here on these two pages. Or please call our Pin Consultants for more unique and customized EB ideas!

**COMMEMORATIVE**

The durable and collectible nature of emblematic jewelry makes our product line an excellent choice to commemorate special events such as:



**GRAND OPENINGS**  
 Die Struck Coins  
 See Pages 20 - 21



**DONOR RECOGNITION EVENTS**  
 Wine Charm  
 See Page 17



**SPECIAL ANNIVERSARIES**  
 Die Struck Coaster/Paperweight  
 Call factory for special quote.

## RECOGNITION

Emblematic jewelry has long been the most universal symbol of recognition. Dating back to the first Olympic medals, to military insignias, to present-day corporate service award pins, recognition programs can:

- > create a positive work environment
- > improve productivity
- > motivate high performance
- > create a culture of recognition



### PRECIOUS METALS

See Pages 4 - 5



### DELUXE DIE-STRUCK

See Pages 6 - 7



### DIE-STRUCK BRASS

See Page 11

## CORPORATE/ORGANIZATIONAL IDENTIFICATION

A contemporary, attractive design featuring a corporate or organizational logo provides a unique opportunity to take that brand into your member's or employee's life outside of the office or group, providing a greater sense of:

- > pride
- > loyalty
- > unity



### ULTRA CLOIS PROCESS

See Page 8



### DIE-STRUCK ANTIQUE

See Page 11



### PROMOTIONAL DIE-STRUCK

See Page 12

## SPORTS/TEAM TRADING PINS

Trading pins at sporting events and tournaments continues to grow in popularity. Promote your team. Wow your competition with unique and creative lapel, hat, and bag pins. Larger designs preferred. Consider special options such as:

- > Movable parts
- > Blinking lights
- > Glitter enamels



### PROMO DIE-STRUCK

See Page 12



### SCREENED EMBLEMS WITH EPOXY DOMES

See Page 14





## Achievement & Recognition Awards

- Each emblem is individually hand crafted to perfection using a variety of precious metals including sterling silver, 1/10 10K gold filled, 10K solid gold, and 14K solid gold.
- Each emblem is marked identifying the precious metal used, as required by federal government regulations.
- Precious metal emblems provide:
  - An ultimate symbol of achievement.
  - An enduring reminder of accomplishment.

### PRODUCTS AVAILABLE

Lapel pins, tie tacks, charms, pendants. *See Pages 16–19.*

### PRICING

Emblem pricing for all types of precious metal emblems is directly tied to the global market prices for both Gold and Silver. In addition, the size of the emblem directly affects the price. **With these two constantly changing factors, all precious metal emblems must be quoted on an order-by-order basis. Price quotes will be based on stated sizes and current market metal rates at the date of requests.**

Example pricing for a 5/8-inch round emblem with a deluxe back, deluxe hand polish, and sandblasted background is provided below based on metal market rates of: Gold market \$1,400 per oz.; Silver market \$30 per oz.

5/8-inch Round Emblem*	10	25	50	100
	-24	-49	-99	-249
8701-S Sterling Silver	47.00	25.40	21.20	19.60
8801-GF Gold Filled	57.00	37.80	33.20	31.20
	*Includes plastic gift box			4A
8901-T 10K Solid Gold	232.00	205.00	185.00	175.00
9001-F 14K Solid Gold	346.00	308.00	280.00	265.00
	*Includes deluxe 2-piece gift box			4C

**NEW!**  
With gold market prices reaching historic highs, our new 1/20th precious metal gold-filled emblems are a cost-saving option.



Almost identical to our standard 1/10th gold-filled, but with less gold content for a lower price point. Example pricing below based on market rate noted above.

Gold-Filled Round Emblem*	10	25	50	100
	-24	-49	-99	-249
8001-GF 5/8" (1/20th)	38.60	26.20	22.00	20.40
	*Includes plastic gift box			4A

## GENERAL INFORMATION

### SET-UP CHARGES (ONETIME)

**Stamping die:** Simple (two level), \$250.00 (G).  
Complex (multiple level), quoted upon review of art.  
**Outside trim die:** Stock shape, no charge.  
Custom (irregular) shape, \$225.00 (G).

### ART REQUIREMENTS

Computer generated art required (see *Back Cover* for acceptable formats). If unavailable, \$40.00 (C) art charge.

### PACKAGING

**Standard:** Plastic gift box (included in emblem price).  
**Optional:** See *pages 25 to 27.*

### ENAMEL OPTIONS

**Standard color fill:** Add \$0.66 (A) per color.  
**Epoxy enamel (like cloisonné):** Add \$1.35 (C) per color.

### PREPRODUCTION SAMPLE

\$40.00 (G) and applicable tooling. Two week delivery.

### PRODUCTION SCHEDULE

**Order (from art approval) and reorders (from receipt of order):** Without stones or enamel: **three to four weeks.** With stones and/or enamel: **four to five weeks.**  
**Rush service:** Available preauthorized. Inquire for availability and pricing.



### STONES/ENGRAVING

Enhance these recognition and achievement awards through the addition of precious or semi-precious stones and/or engravings.

### ENGRAVING

Engraved into emblem and color-filled

Deep-cut engrave	1-49	50-99	100+
Up to two characters	1.95	1.45	1.35
			3C

Add \$0.50 (C) for additional characters engraved.  
For burnish (shallow) engrave, add \$0.40 (C) per character engraved.

### STONES

**Synthetic stones** (2 - 10 pts.) rubies, sapphires, emeralds, white spinels, \$3.70 (C) each.

Genuine stone (sized in points)	●.01	●.02	●.03	●.04	●.06	●.08
Sapphire, ruby	5.35	5.95	7.60	9.25	12.60	15.90
Emerald	7.30	8.20	9.80	11.75	14.10	16.15
Diamond	13.30	23.00	33.10	44.40	68.00	83.00
						6C

Stone pricing based on quantities of 50 or less. Request special quote for larger quantities and for sizes and genuine stones not listed here.

PROUDLY  
AMERICAN  
MADE



14K Gold with  
precious stones



10K Gold with engraved number



Two-piece  
emblems



Gold filled with color fill



Quality craftsmanship  
is all in the details.



Gold filled with sandblasting

Please call  
Elliot-Barry for  
a current  
price quote.



Pierced emblems



Sterling Silver  
with color fill



EB's new wooden and deluxe gift boxes  
offer an elegant presentation and  
complement our finest emblems.  
See Page 27.

Sterling Silver  
with sandblasting



## Jewelry Quality at a Great Price

- Very unique product that offers the same look as precious metal at a significant savings.
- 100% manufactured in the USA.
- Create custom award pins by adding stones and/or engravings.
- Several metal finish options available. PMS color matching at no additional charge.

Our deluxe die-struck emblems are individually handcrafted using base metals (copper or brass). Each piece is hand finished and either plated gold or silver or antiqued providing the luster and appeal of fine jewelry.

Deluxe die-struck emblems are priced by finish and provide an excellent option for:

- Corporate and organizational **identification** pins
- Corporate and organizational **anniversary** pins



**The look of real gold or silver at a fraction of the cost!**

*Stamped using the same process as our precious metal selections, deluxe die-struck emblems provide an enduring award of recognition, and look great with stones and/or engraving! An excellent alternative to precious metals in today's economy for the budget-minded customer!*

### SET-UP CHARGES

**Stamping die:** Simple, \$250.00 (G). Complex, call for quote.

**Trimming die:** Stock shapes, no charge. Custom shapes, \$225.00 (G).

### PREPRODUCTION SAMPLE

\$40.00 (G) and applicable tooling. Two week delivery.

### PRODUCTION SCHEDULE

**Order (from art approval) and reorders (from receipt of order):** Without stones or enamel: **three to four weeks**. With stones and/or enamel: **four to five weeks**.

**Rush service:** Available preauthorized. Inquire for availability and pricing.

### ART REQUIREMENTS

Computer generated art required (see *Back Cover* for acceptable formats). If unavailable, \$40.00 (C) art charge applicable.

### PACKAGING

**Standard:** Poly bag (included).

**Optional:** See pages 25 to 27.

### ADDITIONAL BACKING AND PRODUCT IDEAS

See alternative backing options AND additional product ideas for these emblems on pages 16 through 19.

## HIGH-POLISHED SANDBLAST TWO-TONED FINISH (GOLD OR NICKEL SILVER)

Details of the logo are raised areas of metal and highly polished with the background sandblasted for a satin finish. Sizes up to one inch.

Two-toned gold or silver finish Attachments	50	100	250	500	1000	2500
	-99	-249	-499	-999	-2499	-4999
67-T military back/ 6727-T charm/ 6713-T flat	7.50	5.90	4.90	4.30	3.80	3.60
6701-T deluxe back/ 6702-T pin back	7.90	6.30	5.30	4.60	4.20	4.00

6A

## HIGH-POLISHED SANDBLAST WITH THE ADDITION OF COLOR FILL

Details are raised areas of metal, highly polished with color(s) added to the background. PMS colors available at no charge. Price includes sandblasting, **one color**, and sizes up to one inch. **Add \$0.66 (A) for each additional color.**

Polished with one color	50	100	250	500	1000	2500
	-99	-249	-499	-999	-2499	-4999
67-X military back/ 6727-X charm/ 6713-X flat	8.16	6.56	5.56	4.96	4.46	4.26
6701-X deluxe back/ 6702-X pin back	8.56	6.96	5.96	5.26	4.86	4.66

6A

## CLASSIC ANTIQUE FINISH

The look of antiquity as this special finish utilizes a barrel finishing process that provides a durable and ageless bronze or antique silver finish. Sizes up to one inch.

Antique bronze or silver finish Attachments	50	100	250	500	1000	2500
	-99	-249	-499	-999	-2499	-4999
67-A military back	4.40	3.60	3.00	2.30	2.20	1.90
6701-A quality back	4.80	4.00	3.40	2.70	2.60	2.30

6A

Note: Request special quote on quantities of 5,000 or more and for sizes larger than one inch.

## SPECIAL ENAMEL OPTION

**Epoxy enamel ("full fill"):** Add \$1.35 (C) to two-toned pricing per color.

## ENGRAVING

Engraved into emblem and color-filled

Deep-cut engrave	1-49	50-99	100+
Up to two characters	1.95	1.45	1.35

3C

Add \$0.50 (C) for additional characters engraved.

For burnish (shallow) engrave, add \$0.40 (C) per character engraved.

## STONES

**Synthetic stones** (2 - 10 pts.) rubies, sapphires, emeralds, white spinels, \$3.70 (C) each.

Genuine stone (sized in points)	●.01	●.02	●.03	●.04	●.06	●.08
Sapphire, ruby	5.35	5.95	7.60	9.25	12.60	15.90
Emerald	7.30	8.20	9.80	11.75	14.10	16.15
Diamond	13.30	23.00	33.10	44.40	68.00	83.00

6C

Stone pricing based on quantities of 50 or less. Request special quote for larger quantities and for sizes and genuine stones not listed here.



Antique Silver Finish

Silver Tone Finish with Color Fill



PROUDLY AMERICAN MADE 



This detail of an Elliot-Barry emblem shows our superb quality.



Gold Tone Finish with Color Fill



Antique Bronze Finish



Reinforce the message of your recognition emblem on a memorable, economical printed card. See Page 25.

High-Polished Two-Toned Finish

8



## Exceptional Quality

- High quality die-struck process.
- Vibrant “full fill” enamel.
- PMS color matching.
- Raised lines of metal must separate Ultra Clois enamel.
- Screen overprinting available when small areas of detail are required to show in color. (See 2-Step Process described above.)
- Metal finishes available: gold, silver or black nickel.

### ULTRA CLOIS - ITEM 6801-E

Emblem with military back	100	250	500	1000	2500
	-249	-499	-999	-2499	-4999
Up to 3/4 inch	3.50	2.30	1.90	1.68	1.48
7/8 inch	3.70	2.40	2.00	1.76	1.56
1 inch	3.90	2.50	2.10	1.88	1.76
1 1/4 inch	4.10	2.90	2.60	2.30	2.20

5A

Includes up to four colors. Additional colors, \$0.12 (A) each.  
 Size determined by longest dimension.  
 Request special quote on 5,000 pieces or more and for larger sizes.  
 Sandblast effect with Ultra Clois emblem, add \$0.20 (A).

### SET-UP CHARGES (ONE TIME)

Ultra Clois die: Up to 1 inch, \$100.00 (G).  
 1 1/4 inch, \$110.00 (G). (Waived on orders of 1,000 or more; limit one die per order.)

### PRODUCTION SCHEDULE

New orders (from art approval) and reorders (from receipt of order): Three to four weeks. Rush service: Available preauthorized. Inquire for availability and pricing.

## The 2-Step Process - #P70

For small areas of detail to show in color, EB recommends screen overprinting. Pricing (add to Ultra Clois pricing):  
**Set-up:** \$40.00 (G) per screen color and \$0.08 (A) per screen color run charge.

**STEP 1** We manufacture a fine quality die-struck enamel emblem, finished in gold or nickel silver. Raised metal separates colors.

**STEP 2** We add more colors without metal separating the colors and with close registration even in small details. You get the quality of enamel with the flexibility to precisely duplicate logos.



### ART REQUIREMENTS

Computer generated art required (see Back Cover for acceptable formats). If unavailable, \$40.00 (C) art charge applicable.

### PACKAGING

**Standard:** Poly bag (included in emblem price).  
**Optional:** See pages 25 to 27.

### PREPRODUCTION SAMPLE

\$70.00 (G) and applicable tooling. Allow three weeks for production.

### LESS THAN MINIMUM CHARGE

For orders less than catalog quantity, add \$50.00 (C); absolute minimum, 50 pieces.

### ADDITIONAL BACKING AND PRODUCT IDEAS

See alternative backing options AND additional product ideas for these emblems on Pages 16 to 19.



UltraClois enamel is very durable, making it an excellent process for producing high-end, logoed key tags. See key tag attachment options on Page 21.



Unique and beautiful brass ornaments are produced using our Etched Enamel process. Call our Pin Consultants for design ideas and prices.

### Economical, Lightweight Emblems Ideal for Larger Designs

- Logo etched into brass metal.
- Slightly thinner metal used – more economical than die-struck emblems.
- PMS color matching with smooth, even color fill.
- Raised lines of metal must separate colors.
- Metal finishes available: gold, silver or black nickel.

Etched enamel with military back	100	250	500	1000	2500
6901-E Up to 3/4 inch	2.80	1.70	1.50	1.20	1.00
7/8 inch	2.90	1.80	1.60	1.30	1.10
1 inch	3.00	2.00	1.70	1.40	1.20
1 1/4 inch	3.30	2.30	2.00	1.70	1.50

Includes up to four colors. Additional colors, \$0.12 (A) each.  
Size determined by longest dimension.  
Request special quote on 5,000 pieces or more and for larger sizes.  
Add \$0.08 (A) for epoxy dome.

5A

#### SET-UP CHARGES (ONETIME)

Die: Up to 1 inch, \$90.00 (G). 1 1/4 inch, \$100.00 (G).  
(Waived on orders of 1,000 or more; limit one die per order.)

#### PRODUCTION SCHEDULE

New orders (from art approval) and reorders (from receipt of order): Three to four weeks.  
Rush service: Available preauthorized. Inquire for availability and pricing.

#### ART REQUIREMENTS

Computer generated art required (see Back Cover for acceptable formats). If unavailable, \$40.00 (C) art charge applicable.

#### PACKAGING

Standard: Poly bag (included in emblem price).  
Optional: See pages 25 to 27.

#### PREPRODUCTION SAMPLE

\$70.00 (G) and applicable tooling. Allow three weeks for production.

#### LESS THAN MINIMUM CHARGE

For orders less than catalog quantity, add \$50.00 (C); absolute minimum, 50 pieces.

#### ADDITIONAL BACKING AND PRODUCT IDEAS

See alternative backing options AND additional product ideas for these emblems on Pages 16 to 19.



The Two-Toned Process offers a jewelry-like finish in gold or silver tone.

The addition of a gemstone to your emblem enhances its perceived value.

A nice presentation enhances the perceived value of the emblem. To add a 2-piece gift box, see Page 26.

A unique finish option is to combine gold and silver selective plating. Add \$0.16 (A).

**GENERAL INFORMATION FOR PAGES 10 - 11**

**SET-UP CHARGES (ONE TIME)**

Die: Up to 1 inch, \$100.00 (G). 1 1/4 inch, \$110.00 (G). (Waived on orders of 1,000 or more; limit one die per order.)

**PRODUCTION SCHEDULE**

New orders (from art approval) and reorders (from receipt of order): Three to four weeks.  
Rush service: Available preauthorized. Inquire for availability and pricing.

**ART REQUIREMENTS**

Computer generated art required (see Back Cover for acceptable formats). If unavailable, \$40.00 (C) art charge applicable.

**PACKAGING**

Standard: Poly bag (included in price).  
Optional: See pages 25 to 27.

**PREPRODUCTION SAMPLE**

\$70.00 (G) and applicable tooling. Allow three weeks for production.

**LESS THAN MINIMUM CHARGE**

For orders less than catalog quantity, add \$50.00 (C); absolute minimum, 50 pieces.

**An Elegant, Classic Look**

- High quality die-struck process.
- Brass material.
- Many finishes available, including gold, silver, combination gold/silver, and antique finishes (bronze, copper, gold, and silver).

**SANDBLAST TWO-TONE**

Sandblast emblem with military back	100	250	500	1000	2500
P67-T Up to 3/4 inch	3.00	2.00	1.80	1.40	1.30
7/8 inch	3.20	2.10	1.90	1.60	1.40
1 inch	3.40	2.30	2.00	1.70	1.60
1 1/4 inch	3.90	2.70	2.50	2.20	2.00

Logo text highly polished, background recessed, satin finished. Gold or silver finish. Size determined by longest dimension. Request special quote on 5,000 pieces or more and for larger sizes.

5A



The Antique Process offers a unique, elegant finish, and works great for 3D designs.

The addition of color to background areas enhances small areas of detail shown in metal.

For a personal touch, consider engraving the years of service you are recognizing on your emblem.

- PMS color matching.
- Raised lines of metal must separate colors.
- Special colors available: transparent glitter enamels.

**ANTIQUÉ**

Antique emblem with military back	100	250	500	1000	2500
P67-A Up to 3/4 inch	3.00	2.00	1.80	1.40	1.30
7/8 inch	3.20	2.10	1.90	1.60	1.40
1 inch	3.40	2.30	2.00	1.70	1.60
1 1/4 inch	3.90	2.70	2.50	2.20	2.00

Antique bronze, copper, gold, or silver. Great for 3-D designs. Includes up to four colors. Size determined by longest dimension. Request special quote on 5,000 pieces or more and for larger sizes.

**COLOR FILL**

Color-filled emblem with military back	100	250	500	1000	2500
P67-X Up to 3/4 inch	2.90	1.80	1.60	1.30	1.20
7/8 inch	3.10	1.90	1.70	1.40	1.30
1 inch	3.20	2.10	1.80	1.50	1.40
1 1/4 inch	3.50	2.40	2.30	1.80	1.70

Gold, silver or black nickel finish. Includes up to four colors. Additional colors, \$0.12 (A) each. Sandblast effect with color-fill emblem, add \$0.20 (A). Size determined by longest dimension. Request special quote on 5,000 pieces or more and for larger sizes.

**FOR RECOGNITION AWARDS**

**ENGRAVING**

Up to two numerals deep-cut engraved and color filled. Set-up: add \$20.00 (A) per year. Run charge: add \$0.40 (A) per emblem.

**STONES**

Synthetic stones (rubies, sapphires, emeralds, white spinels) glued in: 2 - 8 pt., \$0.80 (A).

**ADDITIONAL BACKING AND PRODUCT IDEAS**

See alternative backing options AND additional product ideas for these emblems on Pages 16 - 19.



Present your emblem in a keepsake suede pouche. See Page 25.



Two-toned gold or silver tone finishes are now available in Promo Die-Struck!

### Our Lowest-Priced Emblems

- High-quality die-struck process.
- Very economical.
- Iron base metal.
- PMS color matching.
- Raised lines of metal must separate colors.
- Metal finishes available: gold or silver tone.

#### LOW PRICE, GREAT VALUE

Emblem with military back	250	500	1000	2500	5000
	-499	-999	-2499	-4999	-9999
P66-X Up to 3/4 inch	1.70	1.20	0.84	0.72	0.66
7/8 inch	1.80	1.30	0.90	0.78	0.70
1 inch	2.00	1.40	1.00	0.86	0.74
1 1/4 inch	2.30	1.50	1.16	0.96	0.84

5A

Includes four colors. Additional colors, \$0.12 (A) each.  
 Size determined by longest dimension.  
 Request special quote on 10,000 pieces or more and for larger sizes.  
 Add \$0.08 (A) for epoxy dome.  
 Sandblast effect with Promo Die Struck emblem, add \$0.20 (A).

#### SET-UP CHARGES (ONETIME)

Die: Up to 1 inch, \$100.00 (G). 1 1/4 inch, \$110.00 (G).  
 (Waived on orders of 1,000 or more; limit one set-up charge per order.)

#### PRODUCTION SCHEDULE

New orders (from art approval) and reorders (from receipt of order): Three to four weeks.  
 Rush service: Available preauthorized. Inquire for availability and pricing.

#### ART REQUIREMENTS

Computer generated art required (see Back Cover for acceptable formats). If unavailable, \$40.00 (C) art charge applicable.

#### PACKAGING

Standard: Poly bag (included in price).  
 Optional: See pages 25 to 27.

#### PREPRODUCTION SAMPLE

\$70.00 (G) and applicable tooling. Allow three weeks for production.

#### LESS THAN MINIMUM

For orders less than catalog quantity, add \$50.00 (C); absolute minimum, 100 pieces.

#### ADDITIONAL BACKING AND PRODUCT IDEAS

See alternative backing options AND additional product ideas for these emblems on pages 16 to 19.



The die cast process can produce attractive, trendy "message" pendants. Add \$0.40(A) for 18" simulated leather cord to pricing below.

Excellent for producing unique, logoed key rings. Four styles available on Page 21.

### Great for Dimensional Designs and Cut-Out Letters

- Emblems formed using steel dies and casting process.
- Zinc alloy metal.
- Great for pierced-out designs and cut-out letters.
- PMS color matching.
- Raised lines of metal must separate colors.
- Metal finishes available: polished gold, polished silver, antique bronze, antique silver, and antique gold.

Emblem with military back		100	250	500	1000	2500
		-249	-499	-999	-2499	-4999
P78	Up to 3/4 inch	3.20	2.10	1.90	1.70	1.60
	7/8 inch	3.30	2.20	2.00	1.80	1.70
	1 inch	3.50	2.30	2.10	1.90	1.80
	1 1/4 inch	3.90	2.70	2.40	2.20	2.00

Includes finish in polished gold, polished silver, antique bronze, antique silver, or antique gold.  
Includes up to four colors. Additional colors, \$0.12 (A) each.  
Size determined by longest dimension.  
Request special quote on 5,000 pieces or more and for larger sizes.

5A

#### SET-UP CHARGES (ONE TIME)

Mold (simple): \$125.00 (G).  
Complex or three dimensional designs:  
Quoted upon review of artwork.

#### PRODUCTION SCHEDULE

New orders (from art approval) and reorders (from receipt of order): Three to four weeks.  
Rush service: Available preauthorized. Inquire for availability and pricing.

#### ART REQUIREMENTS

Computer generated art required (see Back Cover for acceptable formats). If unavailable, \$40.00 (C) art charge applicable.

#### PACKAGING

Standard: Poly bag (included in emblem price).  
Optional: See optional packaging and pricing on pages 25 to 27.

#### PREPRODUCTION SAMPLE

\$70.00 (G) and applicable tooling. Allow three weeks for production.

#### LESS THAN MINIMUM

For orders less than catalog quantity, add \$50.00 (C); absolute minimum, 50 pieces.

#### ADDITIONAL BACKING AND PRODUCT IDEAS

See alternative backing options AND additional product ideas for these emblems on Pages 16 – 19.

14

**Silver-screen print emblems are a low-cost option for large 500+ quantities**

Available in spot or four-color process using a stainless steel material (only available in silver finish).



**For a Precise Registration of Color**

- Logo imprinted directly on gold or silver finished metal.
- Logo printed in spot (Pantone) or four-color process.
- Great option for logos with tight color registration or small areas of detail that must show in color.
- Clear protective epoxy dome included in pricing below.

**BRASS WITH GOLD OR SILVER FINISH**

FOR STANDARD SCREEN PRINT - ITEM P77;  
FOR FOUR-COLOR PROCESS - ITEM P71

Emblem with military back	100	250	500	1000	2500
	-249	-499	-999	-2499	-4999
Up to 3/4 inch	4.00	2.06	1.70	1.14	0.96
7/8 inch	4.10	2.16	1.80	1.22	1.04
1 inch	4.20	2.30	1.94	1.34	1.14
1 1/4 inch	4.60	2.66	2.30	1.62	1.40

5A

**NEW! SILVER-SCREEN PRINT (STAINLESS STEEL SILVER FINISH ONLY)**

FOR SPOT (PMS) COLORS - ITEM P77S;  
FOR FOUR-COLOR PROCESS - ITEM P71S

Emblem with military back	500	1000	2500	5000	10000
	-999	-2499	-4999	-9999	+
Up to 3/4 inch	1.56	1.00	0.72	0.62	0.54
7/8 inch	1.64	1.08	0.80	0.70	0.62
1 inch	1.78	1.16	0.88	0.76	0.68
1 1/4 inch	1.98	1.40	1.10	0.98	0.90

5A

Includes up to five colors. Additional colors, \$0.08 (A) each. Request special quote on 5,000 pieces or more and for larger sizes. Standard or spot color screen print process works with Pantone colors only and offers a bolder or stronger presentation of colors. 4-color print process works with CMYK colors and is great for half tones or photo reproduction. Printed colors are not as bold and may be more gradient in appearance.

**SET-UP CHARGES (ONE TIME)**

Standard screen process: \$40.00 (G) each color.  
4-color process: \$160.00 (G).  
(Waived on orders of 1,000 units or more.)

**PRODUCTION SCHEDULE**

New orders (from art approval) and reorders (from receipt of order): Three to four weeks.  
Rush service: Available preauthorized. Inquire for availability and pricing.

**ART REQUIREMENTS**

Computer generated art required (see Back Cover for acceptable formats). If unavailable, \$40.00 (C) art charge applicable.

**PACKAGING**

Standard: Poly bag (included in emblem price).  
Optional: See optional packaging and pricing on pages 25 to 27.

**PREPRODUCTION SAMPLE**

\$70.00 (G) and applicable tooling. Allow three weeks for production.

**LESS THAN MINIMUM CHARGE**

Not available.

**ADDITIONAL BACKING AND PRODUCT IDEAS**

See alternative backing options AND additional product ideas for these emblems on Pages 16 to 19.



PROUDLY  
AMERICAN  
MADE

Digital!



Need very fast and  
very affordable?  
This is the process!



7/8" oval

1 1/8" oval



Stock  
shapes



1 1/8" rectangle

7/8" rectangle

1" square

3/4" square

**Ships in 5 to 10 Working Days!  
Unlimited Number of Colors**

Here's a new digital process that's ideal when you need good quality lapel pins very fast and very affordably. Choose from six stock shapes listed above. An epoxy dome can be added. PMS color matching is not available.

Emblem with military back	100	250	500	1000	2500
66-BH no epoxy dome	3.30	2.80	2.20	1.80	1.70
66-BHED with epoxy dome	3.60	3.10	2.50	2.10	2.00

5A

**SET-UP CHARGES (INITIAL ORDER ONLY)**

Stock shapes (listed above): \$65.00 (G).

**BACKING AND IMPRINT**

Includes military back and unlimited colors printed on satin brass emblem.

**ART REQUIREMENTS**

Computer generated art required (see Back Cover for acceptable formats). If unavailable, \$40.00 (C) art charge applicable.

**PRODUCTION SCHEDULE**

Order (from art approval): Five to ten working days.  
Quantities more than 2,500: Inquire for production time.

**OPTIONS**

Epoxy dome, see prices in grid, adds two to five working days for delivery.

**PACKAGING**

Standard: Poly bag (included in emblem price).  
Optional: See optional packaging and pricing on pages 25 to 27.

**PREPRODUCTION SAMPLE**

\$40.00 (G) plus set-up charges; allow an additional five days for delivery.

**LESS THAN MINIMUM CHARGE**

For orders less than catalog quantity, add \$50.00 (C); absolute minimum, 50 pieces.

16

**A** Sterling Figaro Charm Bracelet, 7.25",  
SSBRCFIG,  
add \$38.00 (C)\*  
to selected emblem pricing

**B** Gold-Filled Rope Charm Bracelet, 7",  
RLBRC-GF,  
add \$15.00 (C)\*  
to selected emblem pricing

Deluxe Money Clip,  
Gold Tone Scalloped,  
SCALMC-EP,  
add \$28.50 (C)  
to selected emblem pricing

Money Clip in  
Gold or Silver Tone,  
add \$3.60 (C)  
to selected emblem pricing

Cell Phone Charm  
in Gold or Silver  
Tone,  
add \$0.22 (A)  
to selected emblem pricing



**WHEN TO USE  
EMBLEM ENHANCEMENTS**

**Recognition Awards  
Executive Gifts  
Travel Incentives**

We suggest emblems on chains,  
money clips or key fobs.

**Schools  
Product Events**

Our cell phone charm is ideal!

**Organizations  
Member Gifts**

Promote your organization with  
pride using unique jewelry acces-  
sories like earrings or stick pins.

Pierced Earrings  
(Surgical Steel Wire),  
124A, add \$0.24 pair (C)  
to selected emblem pricing

**C** Sterling Rope  
Link Necklace, 18",  
RLNCK-SS,  
add \$14.00 (C)\*  
to selected emblem pricing

**D** Gold-Filled Rope  
Link Necklace, 18",  
RLNCK-GF,  
add \$18.00 (C)\*  
to selected emblem pricing

Twist Lock Key Fob,  
add \$2.70 (C)  
to selected emblem pricing

Stick Pin,  
add \$0.80 (A)  
to selected emblem pricing



*Due to fluctuating gold and silver metal market rates, pricing for sterling silver and gold-filled chains are subject to change. Request quote for current pricing.*

**A** Gold or Silver Tone Neck Chain, NECKCHAIN, add \$2.80 (A) to selected emblem pricing

**B** Gold or Silver Tone Charm Bracelet, 7", add \$2.00 (A) to selected emblem pricing



*For special occasions, present your emblem in a velvet or leatherette gift box. See Page 26.*



Got bling? Die cast charm with rhinestones and silver tone chain. Call our Pin Consultants for details.



**WHEN TO USE EMBLEM ENHANCEMENTS**

**Acknowledgements  
Business Gifts**  
*We suggest emblems on chains.*

**Special Events  
Product Promotions  
Awareness**  
*Our wine charms are a great commemorative item.*

**Academics  
Teacher Appreciation**  
*Bookmarks encourage reading!*



Wine Charms and Bookmarks with charms in gold or silver tone.

We suggest using emblem processes from Pages 6 thru 14.

Wine Charm Wire, add \$0.20 (A)

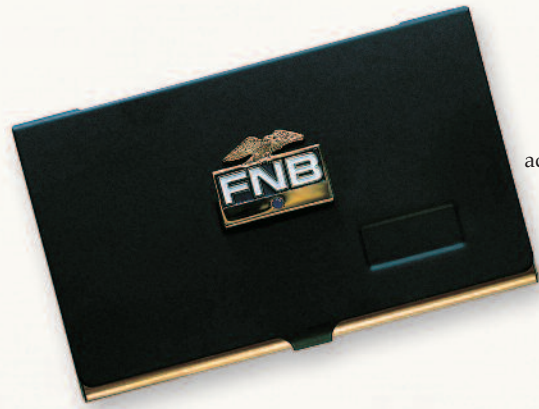
Bookmark, add \$1.80 (A)

Beads, add \$0.12 (A) per bead available in red, blue, green and purple.

*to selected emblem pricing*

DOG TAGS

- A. Screen print on brass.
- B. Screen print on aluminum with rubber guard, add \$0.32 (A).
- C. Promo die struck with two-tone finish.



Card Case, CASE-EP, add \$20.00 (C) to selected emblem pricing



Key finder, add \$1.80 (C) to selected emblem pricing



Zipper Pull, add \$0.10 (C) to selected emblem pricing



WHEN TO USE EMBLEM ENHANCEMENTS

**School Pride  
Organizational ID  
Sport Teams**

*Our dog tags not only stand out; they're very cool, too!*

**Women's Groups  
Product Promotions**

*Key finder — an excellent choice! And one they'll use every day.*

**Business Gifts**

*Cufflinks are a classy gift, and our business card cases make an elegant presentation.*

**RUBBER GUARD**  
Add \$0.32 (A) each.

**SET-UP CHARGES**  
See "Tooling" column on pricing grid.

**PRODUCTION SCHEDULE**  
Order (from art approval) and reorders (from receipt of order): Three to four weeks. **Rush service:** Available preauthorized. Inquire for availability, pricing.

**PACKAGING**  
Poly bag (included).

**PREPRODUCTION SAMPLE**  
\$40.00 (G) and applicable tooling. Allow two weeks for production.

Dog tags	100	250	500	1000	Tooling	
					per side	2nd side
SDT-A	-249	-499	-999	-2499	per color	0.24
Screen print on aluminum, silver finish	2.70	2.50	2.20	1.90	40.00	
SDT-B					per color	0.24
Screen print on brass, gold finish	4.20	4.00	3.60	3.20	40.00	
DDT					150.00	0.40
Promo die struck, gold or silver finish	4.20	4.00	3.60	3.20		
				4A	G	A

Pricing based on standard size 2x 1-1/4 inches and includes 30-inch gold tone or silver tone bead chain. Pricing includes up to four colors. Additional colors, \$0.12 (A) each. Request special quote for larger or smaller sizes.



Sterling Silver or Gold-Filled Cuff Links, swivel wing style, with Made in USA emblems only. Sterling, add \$24.00 pair (C) Gold-Filled, add \$30.00 pair (C) to selected emblem pricing



Promotional Cuff Links with Promotional (import) emblems only. Wing or fixed bullet style only. Add \$2.80 (C) per pair to selected emblem pricing

Deluxe Gold or Silver Tone Cuff Links with Made in USA emblems only. Add \$13.00 per pair (C) to selected emblem pricing



**DIVOT TOOLS**

- A. Antique bronze with die-struck ball marker insert.
  - B. Antique silver with die-struck ball marker insert.
  - C. Antique bronze with screen print ball marker insert.
- Note: Divot tool size is 3 1/4-inches tall.

**DIVOT TOOLS WITH CUSTOM MAGNETIC BALL MARKERS**

Divot tool finishes: Gold, nickel silver, or antiqued in bronze or silver.

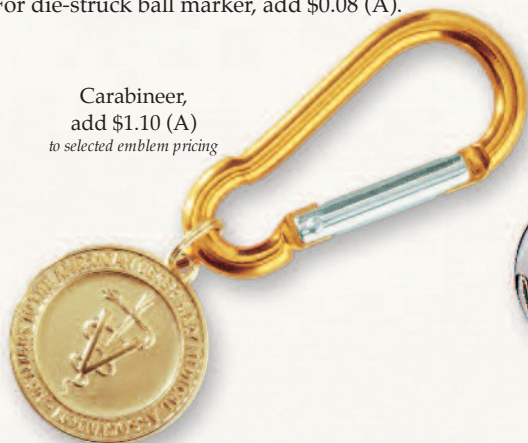
Ball marker finishes: Antiqued in bronze, silver or gold

Brass	50	100	250	500	Tooling Charge
	-99	-249	-499	-999	
P66-Divot tool Die-struck ball marker with divot tool	8.10	6.90	5.70	5.10	100.00
P77-Divot tool Screen print ball marker with divot tool	8.70	7.40	6.00	5.10	per color 40.00
			4A	G	

Includes up to four colors. Additional colors, \$0.12 (A) ea.

**OPTIONS**

**Epoxy dome:** Included in screen print pricing.  
For die-struck ball marker, add \$0.08 (A).



Carabineer,  
add \$1.10 (A)  
to selected emblem pricing



**WHEN TO USE EMBLEM ENHANCEMENTS**

**Business Appreciation**  
**Golf-Lover Gifts**  
**Donor Recognition**  
Select ball markers, hat clips,  
ball markers and divot tools —  
or even select a whole set!

**Student Appreciation**  
**Organizational ID**  
Our zipper pull has a lot of pull for  
customizing bags, briefcases, jackets.

**Special Events**  
**Promotions**  
**Schools**  
Our carabineer is a unique attachment,  
and comes in several colors!



Ball Cap Marker,  
add \$2.70 (C)  
to selected emblem pricing

**MORE GREAT IDEAS!**

How you back your emblem is just as important as the design.



Ball Marker,  
BALL MARKER, add \$0.20 (A)  
to selected emblem pricing



Quality Clutch,  
add \$0.40 (A)  
to selected emblem pricing  
(add suffix -01 to selected  
emblem item #)



Military (Butterfly) Clutch,  
Included with emblems.  
For additional clutch back,  
add \$0.10 (A)  
to selected emblem pricing



Flat Clutch,  
add \$0.36 (A)  
to selected emblem pricing  
(add suffix -01ft to selected  
emblem item #)



1 piece Pinback,  
add \$0.40 (A)  
to selected emblem pricing  
(add suffix -02 to selected  
emblem item #)



Magnet Back Import  
for Pages 12 and 14,  
1 piece, add \$0.40 (A)  
to selected emblem pricing  
(add suffix -MB to emblem #)  
Only available with emblems on  
Pages 12 (gold or silver tone),  
Page 14 (silver tone only)



Quality Clutch Bar  
and Chain,  
add \$1.50 (A)  
to selected emblem pricing  
(add suffix -01chain to selected  
emblem #)



Double Sided Tape,  
add \$0.10 (A)  
to selected emblem pricing  
(add suffix -DT to selected  
emblem item #)



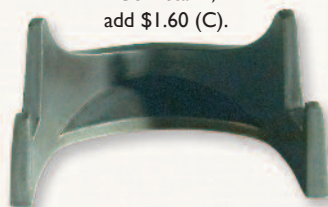
Rubber Back,  
add \$0.06 (A)  
to selected emblem pricing  
(add suffix -RBR to selected  
emblem item #)



Note: For sizes 2 inches or more, request pricing using die-cast process also.



Coin stand, add \$1.60 (C).



**METAL THICKNESS**

Available thickness options are noted in the pricing grid. Refer to illustration below for size reference. Inquire for availability and pricing of other metal thicknesses.

1.6 mm (14 gauge)	2.1 mm (12 gauge)	2.6 mm (10 gauge)	3.2 mm (8 gauge)
----------------------	----------------------	----------------------	---------------------

**RIBBONS**

Neck and drape ribbons available in the following stock colors: red, blue, red / white / blue, yellow / white, black, white. Special colors, sizes, designs quoted upon request.

Neck ribbons: 7 / 8 inch x 30 inch, V-cut, add \$1.00 (C).

Drape ribbons: Add \$0.80 (C).

**Item Codes**

Medallions	P1627
Coins	P1613
Key Tags: Dual Loop	P1611
Key Tags: Figure 8	P1621
Key Tags: Granada	P1643

Specify finish with item code extensions.  
Gold or silver: -T. Antique: -A. Color fill: -X.



Spiral cut edge



Diamond cut edge

Suggested here: Enhancements to your medallion that add eye-appeal! Call our Pin Consultants for pricing.



4-color process insert



Classic reeded edge



Bright chain, add \$0.30 (A)



Granada ring, add \$0.60 (A)



Swivel, add \$0.40 (A)

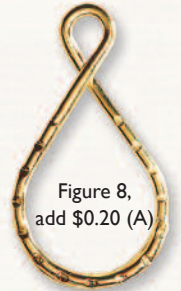


Figure 8, add \$0.20 (A)

Die-striking in brass offers the highest quality in appearance and durability

- Material: Solid brass, priced in thicknesses noted below.
- Finish: Gold tone, silver tone, or antique bronze. SEE SPECIAL FINISH OPTIONS section for optional finishes and prices.
- Colors: Unit pricing for coins and medallions includes up to four colors; add \$0.12 (A) for each additional color.
- Tooling charges: Vary by size and detail; see "Die" columns in unit pricing grid.

One-sided coins/medallions	Quantity			Add for 2nd side	Tooling	
	100	250	500		2-D Die	3-D Die
1 1/4 inches						
1.6 mm thick	3.40	2.90	2.60	n/a	110.00	150.00
2.1 mm thick	4.00	3.50	3.20	0.36	110.00	150.00
1 1/2 inches						
2.1 mm thick	4.80	4.20	3.80	0.46	120.00	160.00
2.6 mm thick	5.50	4.90	4.40	0.46	120.00	160.00
1 3/4 inches						
2.6 mm thick	6.10	5.40	5.00	0.50	140.00	180.00
3.2 mm thick	7.00	6.20	5.70	0.50	140.00	180.00
2 inches						
2.6 mm thick	7.20	6.40	5.90	0.64	160.00	200.00
3.2 mm thick	7.80	6.90	6.30	0.64	160.00	200.00
			3A	A		2G

SPECIAL SIZES, LARGER QUANTITIES

Request special quote on sizes larger than 2 inches and quantities of 1,000 pieces or more.

SPECIAL FINISH OPTIONS

Antique silver (pewter) finish, add \$0.30 (A). Sandblast (satin) finish, add \$0.30 (A) PER SIDE. Epoxy dome, add \$0.16 (A) PER SIDE.

CONSECUTIVE NUMBERING

Engraved: \$0.12 (A). Laser engraved: \$0.08 (A).

PRODUCTION SCHEDULE

Four to five weeks from approval of artwork.

PACKAGING

Standard: Individually poly-bagged. Optional: See optional packaging and pricing on pages 25 to 27.

PREPRODUCTION SAMPLE

\$70.00 (G) and applicable tooling. Allow three weeks for production.

LESS THAN MINIMUM CHARGE

Inquire about availability.

See our complete line of stock emblems at [www.elliottbarry.com](http://www.elliottbarry.com)

- Including:
- 100%
  - Antique key
  - Apple
  - Buffalo
  - Shovel
  - Donkey
  - Elephant
  - Guardian Angel
  - Knife/Fork
  - Lamp of Knowledge
  - Outstanding
  - Rose
  - Snowflake

**GENERAL INFORMATION**

Pins sold as shown. In some cases optional finishes are available. Please inquire. Also request special pricing and production schedule for larger quantities than priced.

**PACKAGING**

Poly bag.

**DELIVERY**

In most cases orders can ship in one to three business days from receipt of order. Check availability when ready to place an order.



**MOTIVATIONAL DIE STRUCK**

Motivational Die Struck	25 -49	50 -99	100 -499	500 -999	1000
	3.40	3.00	2.30	2.20	2.00

5A



**TEAMWORK EMBLEMS**

Teamwork Emblems	25 -49	50 -99	100 -499	500 -999	1000
	2.80	2.00	1.40	1.00	.90

5A

**MOTIVATIONAL KEYTAGS**

Key tags	25 -49	50 -99	100 -499	500 -999	1000
Die-struck antique	3.30	2.90	2.10	1.80	1.60

5A





You can add engraving to many of our stock emblems, showing hours or years of service.

**JEWELLED**

Jeweled	25	50	100
	-49	-99	-499
Die-struck with color	3.50	2.80	2.40
			3A

Custom jeweled award pins available. Call our Pin Consultants for a quote.

**RECOGNITION DIE STRUCK**

Recognition Die Struck	25	50	100	500	1000
	-49	-99	-499	-999	
	3.40	3.00	2.30	2.20	2.00
					5A

\* **ENGRAVED PANEL** with up to 2 characters, add 1.35 (C) and five to ten days for delivery. Add \$.50 (C) for each additional character engraved.

**PATRIOTIC & INSPIRATIONAL**

American flag pin	25	50	100	500	1000
	-49	-99	-499	-999	
	2.00	1.80	1.00	0.80	0.70
					5A

Patriotism and inspiration	25	50	100	500	1000
	-49	-99	-499	-999	
	3.30	2.50	1.80	1.60	1.50
					5A



A stock emblem can look custom on an imprinted card. See Page 25.



**RIBBONS FOR GOOD CAUSES**

Ribbons for good causes	25	50	100	500	1000
	-49	-99	-499	-999	
	3.30	2.60	2.00	1.60	1.40
					5A

24



The detail available in the PVC process is astonishing, with sculptural 3D raised areas. The colors are super bright, too.



We're more flexible than ever!

- Lapel pins ■ Zipper pulls ■ Key tags ■ Magnets
- Bookmarks ■ Luggage tags ■ Bottler openers

PVC with zipper pull or military clutch	250	500	1000	2500	5000+	Tooling	
	-499	-999	-2499	-4999		2D	3D
Up to 1½ inch	1.72	1.56	1.24	1.06	0.96	150.00	220.00
1½ inch	1.94	1.76	1.40	1.24	1.14	180.00	250.00
					5A		2G

PVC with soft magnetic back	250	500	1000	2500	5000+	Tooling	
	-499	-999	-2499	-4999		2D	3D
Up to 2 inch	2.50	2.20	1.80	1.66	1.40	220.00	290.00
2½ inch	2.80	2.50	2.00	1.90	1.60	250.00	320.00
3 inch	3.40	3.10	2.50	2.46	2.10	320.00	390.00
3½ inch	3.60	3.40	2.80	2.60	2.30	360.00	425.00
					5A		2G

PVC key tag with split key ring	250	500	1000	2500	5000+	Tooling	
	-499	-999	-2499	-4999		2D	3D
Up to 2 inch	2.40	2.10	1.70	1.60	1.30	220.00	290.00
2½ inch	2.60	2.30	1.90	1.74	1.50	250.00	320.00
3 inch	3.00	2.70	2.20	2.10	1.80	320.00	390.00
3½ inch	3.10	2.90	2.30	2.20	1.90	360.00	425.00
					5A		2G

**COLORS**

All pricing includes up to 5 PMS colors. Additional molded colors, add \$0.12 (A) per color.

**OPTIONAL SCREEN PRINT**

Front or back side, add \$0.10 (C) per color plus \$40.00 (G) set-up per color.

**PACKAGING**

Pricing includes individual poly bag.

**PRODUCTION TIME**

Four weeks from final art approval.

For bookmarks, luggage tags, and bottle openers, please request special pricing.





**IMPRINTED CARDS**

Imprinted cards are excellent for reaffirming or expanding the message of your lapel pin. Many options are available.

**Inquire with your specifications, and our Pin Consultants will provide pricing.**



**SUEDE POUCHES**  
for pins and accessories 2 x 3"

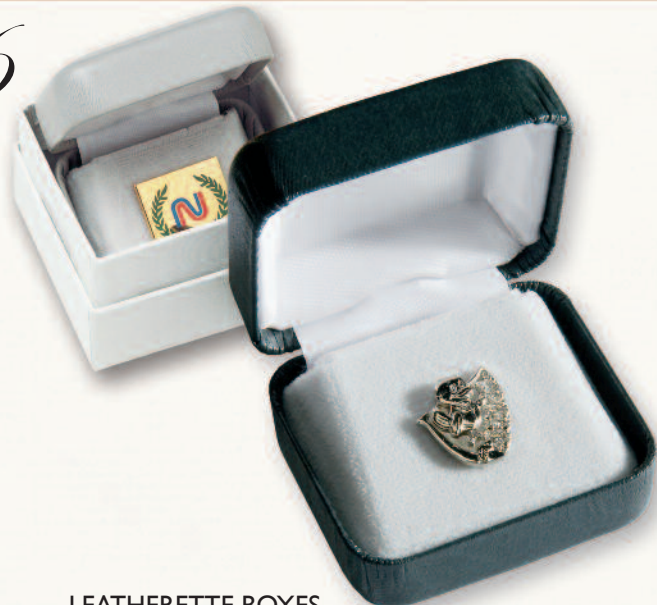
		<500	500 -2499	2500
166G	Green	0.65	0.60	0.55
166BLCK	Black	0.65	0.60	0.55
166RB	Royal Blue	0.65	0.60	0.55
166	Red	0.65	0.60	0.55
				3C



**PLASTIC GIFT BOXES**  
with foam liners

		<500	500 -2499	2500
Small box 1.25 x 1.25"				
173BLCK	black	0.65	0.60	0.55
173BL	dark blue	0.65	0.60	0.55
Medium box 1.625 x 2.125"				
174BLCK	black	0.75	0.70	0.60
Large box 2.875 x 2"				
177BLCK	black	0.95	0.90	0.85
Extra large box 4.625 x 3.5"				
178BLCK	black	2.85	2.75	2.55
				3C

26



**LEATHERETTE BOXES**

1.75 x 1.5" Includes 2-piece white outer box

		<100	100 -499	500
176DG	Grey	4.70	4.60	3.95
176LG	Light grey	4.70	4.60	3.95

3C

**SUPREME VELVET GIFT BOXES**

Includes white outer sleeve

		<100	100 -499	500
Small box 1.8 x 2.125"				
167BLCK	black	2.40	2.20	1.80
167BL	blue	2.40	2.20	1.80
167LG	grey	2.40	2.20	1.80
Large box 3.375 x 2.625"				
168BLCK	black	2.95	2.75	2.40
168BL	blue	2.95	2.75	2.40

3C

**2-PIECE GIFT BOXES**

		<500	500 -2499	2500	
170BLCK	black	2.625 x 1.625"	1.00	0.90	0.80
170BL	blue	1.875 x 1.875"	1.00	0.90	0.80
170W	white	2.625 x 1.625"	1.00	0.90	0.80

3C



**IMPRINTING OPTION**

(Available on all package options except plastic boxes)

Method: Foil stamp, all standard colors available.

**SET-UP CHARGES (ONE TIME)**

\$70.00 (G).

**ART REQUIREMENTS**

Computer generated art required (see Back Cover for acceptable formats). If unavailable, \$40.00 (C) art charge is applicable.

**RUNNING CHARGE (PER IMPRINT)**

Less than 50: \$0.50 (A).  
50 or more: \$0.30 (A).

**NEW! HARDWOOD JEWELRY BOXES**

2 3/8" x 2" Includes 2-piece white outer box. Color shown.

		<100	100 -299	300+
WDBOX	Wood box	12.00	11.50	11.00

3C

**NEW! DELUXE GIFT BOXES**

2" x 2" Includes white outer box, button snap closure.

Black/ white box (shown), blue/ white also available (not shown).

		<100	100 -299	300+
DLXGB	Deluxe box black	3.00	2.80	2.60
DLXGBL	Deluxe box blue	3.00	2.80	2.60

3C



Coin capsules protect medallions and display them, too. Hold coins up to 2 inches in diameter. Add \$0.70 (A).



**NEW! DELUXE BLACK VELVET COIN BOXES**

Includes white outer box, hinged box with custom velvet insert pad.

		100 -199	200 -499	500+
velvet1-82	2 7/8 x 2 7/8" for coins 1 1/2 to 2"	4.60	4.20	call for quote
velvet1-83	3 1/2 x 3 1/2" for coins 2 1/4 to 3"	5.00	4.60	quote

3C



#### CREATIVE DESIGN SERVICES

Translating a trademark or logo into a beautiful piece of jewelry may require the assistance of a skilled artist to create and design an idea. Our factory's art department can transform a client's logo into an effective jewelry design, from instructions and suggestions by the client. Black-and-white layout, \$40.00 (C). Computer-generated colored art, \$60.00 (C).

#### COMPUTER GENERATED ART

Computerized art is accepted via email or disk. Preferred file and format types are CorelDRAW®.cdr or Adobe® Illustrator®.ai or .eps. Bitmap files are acceptable but subject to additional art charge of \$40.00 (C). Fonts must be included unless type is converted to curves or outlines.

#### OVERRUNS/UNDERRUNS

All custom products manufactured are subject to a 5% overrun or underrun. The exception to this is our precious metals. Every effort will be made to ship exact quantities on all other products. If an exact quantity is mandatory, it must be specified when the order is placed.

#### TOOLING COSTS

The tooling costs quoted in this catalog represent the cost for a simple design. Oversized and sculptured dies or molds will be quoted by the factory after artwork is reviewed. All tooling is billed at factory cost and shall remain property of Elliot-Barry Company. All domestic dies and molds will be kept on file for a period of five years. Tooling for imported emblems will be maintained for a period of three years.

#### TERMS

Inquire for details.

#### SHIPPING

All shipments are F.O.B. Colorado factory and routed via UPS unless otherwise specified. Shipments are prepaid and normally invoiced at the time of shipment.

#### TRADEMARKS

Elliot-Barry assumes distributors are authorized to use trademarks presented for reproduction. We assume no liability in trademark or copyright disputes.

#### PRICES

This catalog supersedes previous catalogs and price lists. The factory reserves the right to correct pricing errors in the catalog.

Pricing is based on current market rates of metals used to produce emblematic products. Precious metals fluctuate directly with prevailing market rates at date of order. See explanation of pricing fluctuations on pages 4-5. Emblems produced in non-precious metals are priced at the present market rates of brass and copper. Historically the cost of these metals has been stable. However, in the past year a significant increase in market price has been experienced as demand of metals has exceeded supply. If market pricing for these metals continues to increase at a significant rate, the factory reserves the right to adjust pricing during the year to reflect increases in raw materials cost.

*CorelDRAW® is a registered trademark of Corel Corporation or Corel Corporation Limited in Canada, the United States and/or other countries. Adobe® and Illustrator® are registered trademarks of Adobe Systems Incorporated in the United States and/or other countries.*

[www.elliottbarry.com](http://www.elliottbarry.com)

