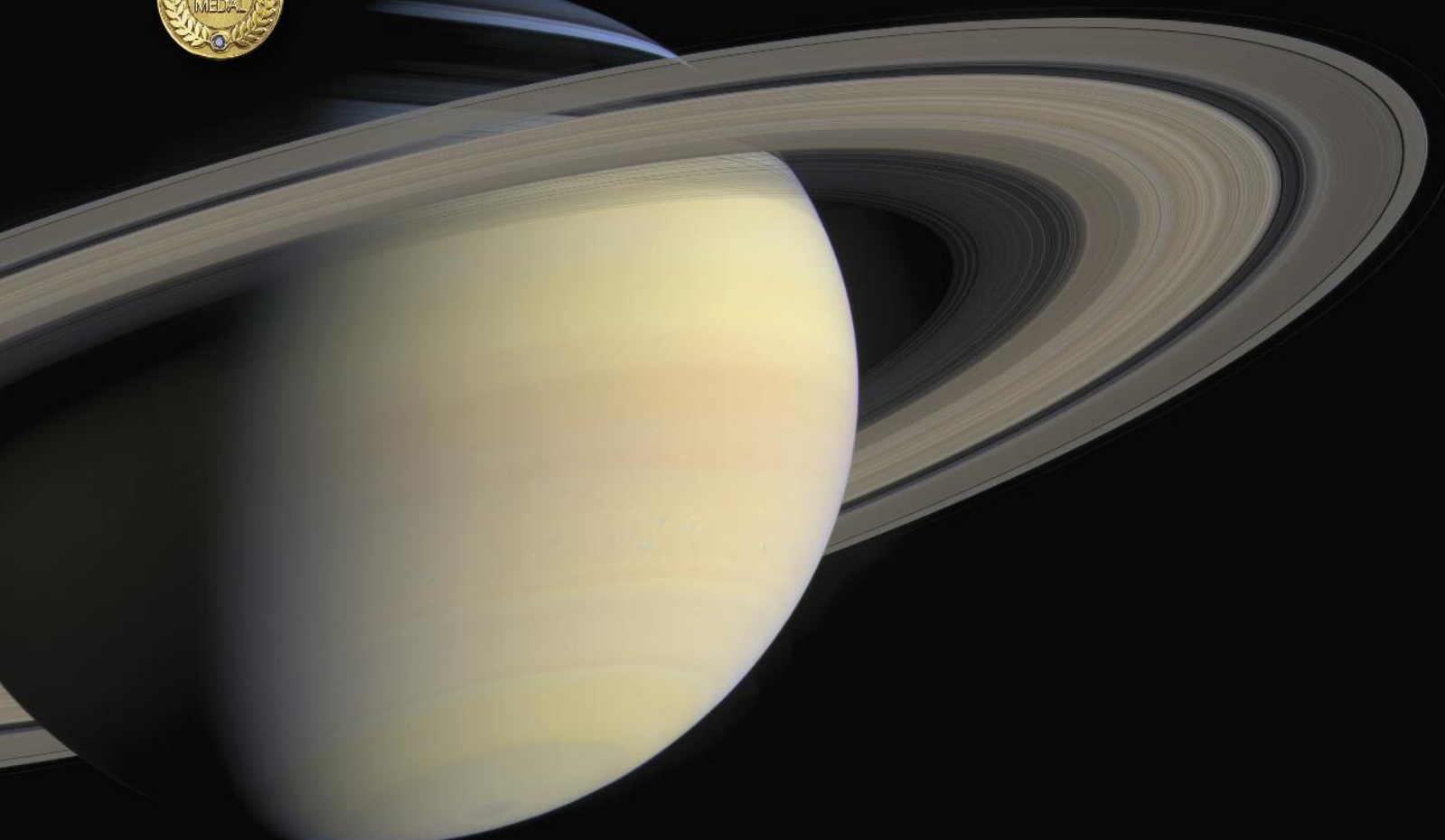


ELLIOT - BARRY

2017



THE FINEST SELECTION OF CUSTOM LAPEL PINS,
CHARMS, COINS, KEY TAGS, ADD-ONS AND MORE

PRODUCT INDEX

Made in USA Die-Struck Precious Metal Emblems	4-5	Custom Charm Ideas	16
Made in USA Deluxe Die-Struck Emblems	6-7	Custom Dog Tags and Divot Tools	17
Ultra Clois & 2-Step Clois-Enamel Emblems	8	Custom Coins	18-19
Etched Enamel Emblems	9	Custom Medallions	20-21
Die-Struck Two-Toned/ Color Filled & Antiqued Emblems	10-11	Stock Emblems	22-24
Promo Die-Struck Emblems	12	Key Tags	25
Die-Cast Emblems	13	Economy Packaging	26
Screened Emblems with Epoxy Dome	14	Deluxe Packaging	27
Optional Backings	15	General Information	28



Custom challenge coin bottle opener
Pages 18-19



Custom challenge coin with removable ball marker
Pages 18-19



Custom wine charms
Page 16



Holiday ornament
Page 13



Badge clip
Pages 6-7



Custom zipper pull
Page 16



Stock theme pins - no set up, ready to ship
Pages 22-23

WE ARE THE ARTISTS WHO CRAFT THE EMBLEMS

Since 1958 Elliot Barry has been producing high quality emblematic jewelry made right here **in the United States**. Our skilled craftsmen work with a wide variety of metals — from brass and copper to precious metals including sterling silver, gold filled and solid gold metals of 10K and 14K quality.

The domestically produced product we offer includes **custom** lapel pins, charms, tie tacs and cuff links designed to offer awards of the **highest intrinsic value** that will enhance your brand.

In addition to our USA-produced product line, we offer a wide array of lapel pin options and unique products produced by our **international manufacturing team**. Imported items offer economically priced options and optional manufacturing processes.

But we don't stop at lapel pins. We also offer other **custom metal products**, some of which are featured on Page 2.

Thank you for putting your trust in Elliot-Barry.

THE EVOLUTION OF THE EMBLEM



BLANKING

We start with a blank piece of base metal or precious metal (gold or silver).



STAMPING

Using a steel die, we stamp the emblem image into the metal blank.



TRIMMING

Using custom tooling, we then cut the emblem out to its actual shape.



STONE SETTING

We set one or more gemstones into the still unfinished emblem.



FUSION

We weld a metal post to the back of the emblem to hold the backing.



FINISHING

We polish and/or plate the emblem.



ENAMELING

We add black colorfill to the background of the emblem, and it is now finished and ready to ship.

RECOGNIZE

ACHIEVEMENT & RECOGNITION AWARDS

AN ULTIMATE SYMBOL OF ACHIEVEMENT, AN ENDURING REMINDER OF ACCOMPLISHMENT

- Each emblem is individually hand crafted to perfection using a variety of precious metals including sterling silver, 1/10 10K gold filled, 10K solid gold, and 14K solid gold.
- Each emblem is marked identifying the precious metal used, as required by federal government regulations.

PRODUCTS AVAILABLE

Lapel pins, tie tacks, charms, pendants, earrings and much more. See Pages 15–16.

ART REQUIREMENTS

Computer generated art required (see *Back Cover* for acceptable formats). If unavailable, \$40.00 (C) art charge.

SET-UP CHARGES (ONE TIME)

Stamping die: Simple (two level), \$270.00 (G).
Complex (multiple level), quoted upon review of art.
Outside trim die: Stock shape, no charge.
Custom (irregular) shape, \$225.00 (G).

PRODUCTION SCHEDULE

New orders:
Without stones, enamel, engraving - 20 to 24 working days.
With stones, enamel, engraving - 24 to 30 working days.
Reorders:
Without stones, enamel, engraving - 18 to 22 working days.
With stones, enamel, engraving - 22 to 26 working days.
Rush service: Preauthorized. Inquire for availability, price.

STERLING SILVER EMBLEMS

Our sterling silver emblems are produced using an alloy of silver containing 92.5% silver and 7.5% other metals. Traditional and timeless sterling silver provides a beautiful look at an exceptional value, ideal for any award program. Each piece is individually hand-crafted by our master craftsmen. And each emblem is individually marked on the backside identifying the precious metal content in accordance with government regulations.



PRICING

Pricing noted here is for example only. It is based on a silver market price of \$16 per ounce at a size of 5/8-inch round with a polished two-tone finish. Due to significant fluctuations in the silver market and the variety of size options, all orders for sterling silver emblems must be custom quoted by Elliot-Barry at current silver market rates and desired size and finish.

5/8-inch Round Emblem*	10	25	50	100
	-24	-49	-99	-249
8701-S Sterling Silver	35.80	22.20	18.80	16.20

*Includes plastic gift box

4A

COLOR ENAMEL OPTIONS

Standard color (soft enamel): add \$0.70 (A) per color to base unit price.

Special epoxy enamel ("full fill" or hard enamel): add \$1.62 (A) for first color and \$0.70 (A) for each additional color to base unit price.

PMS color matching: available at no extra charge.

PREPRODUCTION SAMPLE

\$40.00 (G) and applicable tooling. Two week delivery.

PACKAGING

Standard: Plastic gift box (included in emblem price).

Optional: See pages 26 to 27.

DELUXE PRECIOUS METAL EMBLEMS ~ MADE IN USA

REAL GOLD EMBLEMS

The hallmark of precious metals, gold emblematic jewelry continues to be the pillar of recognition. Several metal options are available and marked to identify metal content in accordance with government regulations. **Metal options:** 10K gold filled (1/10th or 1/20th), 10K solid gold, and 14K solid gold.



PRICING

Pricing noted here is for example only, based on a gold market price of \$1,100 per ounce at a size of 5/8-inch round with a polished two-tone finish. Due to significant fluctuations in the gold market and the variety of size options, all orders for gold emblems must be custom quoted by Elliott-Barry at current gold market rates and desired size and finish.

5/8-inch Round Emblem*	10	25	50	100
	-24	-49	-99	-249
8001-GF Gold Filled (1/20th)	39.80	25.80	22.40	19.60
8801-GF Gold Filled (1/10th)	50.80	35.80	32.40	29.00
	* Includes plastic gift box			4A
8901-T 10K Solid Gold	202.00	164.50	156.00	145.00
9001-F 14K Solid Gold	292.50	243.00	232.00	216.00

* Includes deluxe 2-piece gift box 4C

COLOR ENAMEL OPTIONS

Standard color (soft enamel): add \$0.70 (A) per color to base unit price.

Special epoxy enamel ("full fill" or hard enamel): add \$1.62 (A) for first color and \$0.70 (A) for each additional color to base unit price.

PMS color matching: available at no extra charge.

PREPRODUCTION SAMPLE

\$40.00 (G) and applicable tooling. Two week delivery.

PACKAGING

Standard: Plastic gift box (included in emblem price).

Optional: See pages 26 to 27.



ENHANCEMENTS

The addition of precious or semi-precious stones and/or personalized engraving will enhance these special emblems and provide an excellent means for distinguishing levels of achievement. Elliott-Barry individually bead sets each stone to allow for maximum clarity and brilliance. Engravings are deep-cut and can be filled with color.

ENGRAVING

Engraved into emblem and color-filled

Deep-cut engrave	1-49	50-99	100+
Up to two characters	2.00	1.50	1.40

3C

Add \$0.50 (C) for additional characters engraved.

For burnish (shallow) engrave, add \$0.40 (C) per character engraved.

STONES

Synthetic stones (2 - 10 pts.) rubies, sapphires, emeralds, white spinels, \$3.90 (C) each.

Genuine stones (sized in points)	●.01	●.02	●.03	●.04	●.06
Diamond	15.00	24.50	35.50	48.50	75.00
Sapphire, ruby	5.75	7.50	9.50	11.00	13.50
Emerald	7.50	9.00	11.50	13.00	15.00

5C

Stone pricing based on quantities of 50 or less. Request special quote for larger quantities and for sizes and genuine stones not listed here.

The appearance of real gold or silver metal at a fraction of the price!

- Very unique product that offers the same look as precious metal at a significant savings.
- 100% manufactured in the USA.
- Create custom award pins by adding stones and/or engravings.
- Several metal finish options available. PMS color matching at no additional charge.

Our deluxe die-struck emblems are individually handcrafted using base metals (copper or brass). Each piece is hand finished and either plated gold or silver or antiqued providing the luster and appeal of fine jewelry.

Deluxe die-struck emblems are priced by finish and provide an excellent option for:

- Corporate and organizational **identification** pins
- Corporate and organizational **anniversary** pins

The precious metal look at a fraction of the cost!



Stamped using the same process as our precious metal selections, deluxe die-struck emblems provide an enduring award of recognition, and look great with stones and/or engraving! An excellent alternative to precious metals in today's economy for the budget-minded customer!

SET-UP CHARGES

Stamping die: Simple, \$270.00 (G). Complex, call for quote.
Trimming die: Stock shapes, no charge. Custom shapes, \$225.00 (G).

PREPRODUCTION SAMPLE

\$40.00 (G) and applicable tooling. Two week delivery.

PRODUCTION SCHEDULE

New orders:

Without stones, enamel, engraving - 20 to 24 working days.
 With stones, enamel, engraving - 24 to 30 working days.

Reorders:

Without stones, enamel, engraving - 18 to 22 working days.
 With stones, enamel, engraving - 22 to 26 working days.

Rush service: Preauthorized. Inquire for availability, price.

ART REQUIREMENTS

Computer generated art required (see *Back Cover* for acceptable formats). If unavailable, \$40.00 (C) art charge applicable.

PACKAGING

Standard: Poly bag (included).

Optional: See pages 26 to 27.

HIGH-POLISHED SANDBLAST 2-TONED FINISH

Details of the logo are raised areas of metal and highly polished with sandblast background. Sizes up to one inch.

Emblem/ lapel pin	50 -99	100 -249	250 -499	500 -999	1000 -2499	2500 -4999
----------------------	-----------	-------------	-------------	-------------	---------------	---------------

TRU-GOLD PLATE FINISH

67-TG military back/ 6727-TG charm	8.10	6.50	5.40	4.90	4.30	4.10
6701-TG deluxe clutch	8.60	7.00	5.90	5.40	4.80	4.60

SILVER FINISH

67-TS military back/ 6727-TS charm	7.90	6.30	5.20	4.70	4.10	3.90
6701-TS deluxe clutch	8.40	6.80	5.70	5.20	4.60	4.40

See other backing, charm options on pages 15-16.

6A

CLASSIC ANTIQUE FINISH

The look of antiquity as this special finish utilizes a barrel finishing process that provides a durable and ageless bronze or antique silver finish. Sizes up to one inch.

Emblem/ lapel pin	50 -99	100 -249	250 -499	500 -999	1000 -2499	2500 -4999
----------------------	-----------	-------------	-------------	-------------	---------------	---------------

ANTIQUÉ BRONZE FINISH

67-AB military back/ 6727-AB charm	4.60	3.80	3.20	2.40	2.30	2.00
6701-AB deluxe clutch	5.10	4.30	3.70	2.90	2.80	2.50

ANTIQUÉ SILVER FINISH

67-AS military back/ 6727-AS charm	4.90	4.10	3.50	2.70	2.60	2.30
6701-AS deluxe clutch	5.40	4.60	4.00	3.20	3.10	2.80

See other backing, charm options on pages 15-16.

6A

Note: Request special quote on quantities of 5,000 or more and for sizes larger than one inch.

COLOR FILL ENAMEL OPTIONS

Standard: add \$0.70 (A) per color to above unit price.

Special epoxy enamel ("full fill"): add \$1.62 (A) for first color and \$0.70 (A) for each additional color.

PMS color matching: available at no extra charge.

EB ENHANCEMENTS

ENGRAVING

Engraved into emblem and color-filled

Deep-cut engrave	1-49	50-99	100+
Up to two characters	2.00	1.50	1.40

3C

Add \$0.50 (C) for additional characters engraved.

For burnish (shallow) engrave, add \$0.40 (C) per character engraved.

STONES

Synthetic stones (2 - 10 pts.) rubies, sapphires, emeralds, white spinels, \$3.90 (C) each.

Genuine stone (sized in points)	● .01	● .02	● .03	● .04	● .06
Diamond	15.00	24.50	35.50	48.50	75.00
Sapphire, ruby	5.75	7.50	9.50	11.00	13.50
Emerald	7.50	9.00	11.50	13.00	15.00

5C

Stone pricing based on quantities of 50 or less. Request special quote for larger quantities and for sizes and genuine stones not listed here.

SEE PAGES 15 & 16 for unique product ideas for this process other than lapel pins as well as optional backings.

HONOR



Antique Silver Finish



Silver Tone Finish with Color Fill



Tru-Gold Finish with Color Fill

High-Polished with Tru-Gold Two-Toned Finish



IDEA



Antique Bronze Finish



NEW! Badge clips are a unique way to attach an award, ID, or themed emblem to a security badge. See Page 15 for add-on pricing.

ULTRA CLOIS, 2-STEP CLOIS-ENAMEL EMBLEMS



Exceptional Quality

- High quality die-struck process.
- Vibrant "full fill" enamel.
- PMS color matching.
- Raised lines of metal must separate Ultra Clois enamel.
- Screen overprinting available when small areas of detail are required to show in color. (See 2-Step Process described above.)
- Metal finishes available: gold, silver or black nickel.

ULTRA CLOIS - ITEM 6801-E

Emblem with military back	100	250	500	1000	2500
	-249	-499	-999	-2499	-4999
Up to 3/4 inch	3.42	2.40	1.96	1.74	1.56
7/8 inch	3.58	2.52	2.00	1.86	1.66
1 inch	3.84	2.76	2.24	2.02	1.80
1-1/8 inch	4.08	2.96	2.50	2.28	2.00
1-1/4 inch	4.72	3.48	2.92	2.66	2.46

5A

Includes up to four colors. Additional colors, \$0.12 (A) each. Add \$0.10 (A) for screen overprint. Size determined by longest dimension. Request special quote on 5,000 pieces or more and for larger sizes.

SET-UP CHARGES (ONE TIME)

Ultra Clois die: Up to 1 inch, \$100.00 (G).
1 1/4 inch, \$110.00 (G). (Waived on orders of 1,000 or more; limit one die per order.)

PRODUCTION SCHEDULE

New orders (from art approval) and reorders (from receipt of order): 20 to 23 working days. Rush service: Available preauthorized. Inquire for availability and pricing.

For small areas of detail to show in color, EB recommends screen overprinting.

Pricing (add to Ultra Clois pricing):

Set-up: \$40.00 (G) per screen color and \$0.10 (A) per screen color run charge.

STEP 1 We manufacture a fine quality die-struck enamel emblem, finished in gold or nickel silver. Raised metal separates colors.

STEP 2 We add more colors without metal separating the colors and with close registration even in small details. You get the quality of enamel with the flexibility to precisely duplicate logos.



THE 2-STEP PROCESS #P70

ART REQUIREMENTS

Computer generated art required (see Back Cover for acceptable formats). If unavailable, \$40.00 (C) art charge applicable.

PACKAGING

Standard: Poly bag (included in emblem price).
Optional: See pages 26 to 27.

PREPRODUCTION SAMPLE

\$70.00 (G) and applicable tooling. Allow three weeks for production.

LESS THAN MINIMUM CHARGE

For orders less than catalog quantity, add \$35.00 (C); absolute minimum, 50 pieces.

EB ENHANCEMENTS

Tru-Gold plating: Up to 1 inch, add \$0.12 (A) each.
Up to 1-1/4 inch, add \$0.14 (A) each.

Sandblast (satin) finished background: Add \$0.20 (A) each.

SEE PAGES 15 & 16 for unique product ideas for this process other than lapel pins as well as optional backings.

IDEA

Wine or beer mug charms - Use the Ultra Clois process or most processes in our catalog to produce these unique pieces. See Page 16 for add-on pricing.





Unique and beautiful brass ornaments are produced using our Etched Enamel process. Call our Pin Consultants for design ideas and prices.



Economical, Lightweight Emblems Ideal for Larger Designs

- Logo etched into brass metal.
- Slightly thinner metal used – more economical than die-struck emblems.
- PMS color matching with smooth, even color fill.
- Raised lines of metal must separate colors.
- Metal finishes available: gold, silver or black nickel.

Etched enamel with military back	100	250	500	1000	2500
	-249	-499	-999	-2499	-4999
6901-E Up to 3/4 inch	2.86	1.92	1.38	1.22	1.00
7/8 inch	3.02	2.06	1.52	1.34	1.10
1 inch	3.26	2.28	1.74	1.54	1.38
1-1/8 inch	3.58	2.56	1.98	1.82	1.68
1-1/4 inch	3.84	2.80	2.22	2.02	1.86

Includes up to four colors. Additional colors, \$0.12 (A) each. Size determined by longest dimension. Request special quote on 5,000 pieces or more and for larger sizes.

SET-UP CHARGES (ONE TIME)

Die: Up to 1 inch, \$90.00 (G). 1 1/4 inch, \$100.00 (G). (Waived on orders of 1,000 or more; limit one die per order.)



PRODUCTION SCHEDULE

New orders (from art approval) and reorders (from receipt of order): 20 to 23 working days. Rush service: Available preauthorized. Inquire for availability and pricing.

ART REQUIREMENTS

Computer generated art required (see Back Cover for acceptable formats). If unavailable, \$40.00 (C) art charge applicable.

PACKAGING

Standard: Poly bag (included in emblem price). Optional: See pages 26 to 27.

PREPRODUCTION SAMPLE

\$70.00 (G) and applicable tooling. Allow three weeks for production.

LESS THAN MINIMUM CHARGE

For orders less than catalog quantity, add \$35.00 (C); absolute minimum, 50 pieces.

EB ENHANCEMENTS

Tru-Gold plating: Up to 1 inch, add \$0.12 (A) each. Up to 1-1/4 inch, add \$0.14 (A) each.

Epoxy dome: Add \$0.10 (A) each.

SEE PAGES 15 & 16 for unique product ideas for this process other than lapel pins as well as optional backings.

2-TONE TRUGOLD/SILVER
DIE-STRUCK BRASS



The Two-Toned Process offers a jewelry-like finish in gold or silver tone.

The addition of a gemstone to your emblem enhances its perceived value.

A unique finish option is to combine gold and silver selective plating. Add \$0.40 (A).

IDEA For a different look, the same emblem can be produced in multiple finishes.



An Elegant, Classic Look

- High quality die-struck process.
- Brass material.

SILVER TWO-TONE FINISH

Sandblast emblem with military back	100	250	500	1000	2500
	-249	-499	-999	-2499	-4999
P67-T Up to 3/4 inch	3.32	2.16	1.68	1.50	1.44
7/8 inch	3.50	2.32	1.80	1.60	1.54
1 inch	3.78	2.56	1.98	1.78	1.72
1-1/8 inch	4.00	2.86	2.18	1.88	1.78
1-1/4 inch	4.62	3.40	2.66	2.32	2.16

EB ENHANCEMENTS

Tru-Gold plating: Up to 1 inch, add \$0.12 (A) each.
Up to 1-1/4 inch, add \$0.14 (A) each.

Logo text highly polished, background recessed, satin finished.
Size determined by longest dimension.
Request special quote on 5,000 pieces or more and for larger sizes.

GENERAL INFORMATION FOR PAGES 10 & 11

SET-UP CHARGES (ONE TIME)
Die: Up to 1 inch, \$100.00 (G). 1 1/4 inch, \$110.00 (G).
(Waived on orders of 1,000 or more; limit one die per order.)

PRODUCTION SCHEDULE
New orders (from art approval) and reorders (from receipt of order): 20 to 23 working days.
Rush service: Available preauthorized. Inquire for availability and pricing.

ART REQUIREMENTS
Computer generated art required (see Back Cover for acceptable formats). If unavailable, \$40.00 (C) art charge applicable.

PACKAGING
Standard: Poly bag (included in price).
Optional: See pages 26 to 27.

PREPRODUCTION SAMPLE
\$70.00 (G) and applicable tooling. Allow three weeks for production.

LESS THAN MINIMUM CHARGE
For orders less than catalog quantity, add \$35.00 (C); absolute minimum, 50 pieces.

IDEA

For a personal touch, consider engraving the years of service you are recognizing on your emblem.

The Antique Process offers a unique, elegant finish, and works great for 3D designs.

The addition of color to background areas enhances small areas of detail shown in metal.

- PMS color matching.
- Raised lines of metal must separate colors.
- Special colors available: transparent glitter enamels.

DIE-STRUCK ANTIQUE BRONZE, ANTIQUE SILVER OR ANTIQUE GOLD

Antique emblem with military back	100	250	500	1000	2500
	-249	-499	-999	-2499	-4999
P67-A Up to 3/4 inch	3.32	2.16	1.68	1.50	1.44
7/8 inch	3.50	2.32	1.80	1.60	1.54
1 inch	3.78	2.56	1.98	1.78	1.72
1-1/8 inch	4.00	2.86	2.18	1.88	1.78
1-1/4 inch	4.62	3.40	2.66	2.32	2.16

Includes up to four colors. Size determined by longest dimension. Request special quote on 5,000 pieces or more and for larger sizes.

5A

COLOR FILL

Color-filled emblem with military back	100	250	500	1000	2500
	-249	-499	-999	-2499	-4999
P67-X Up to 3/4 inch	3.12	1.96	1.52	1.34	1.30
7/8 inch	3.28	2.10	1.60	1.44	1.38
1 inch	3.56	2.32	1.76	1.58	1.54
1-1/8 inch	3.70	2.78	1.96	1.74	1.70
1-1/4 inch	4.28	3.30	2.38	2.14	1.88

5A

Gold, silver or black nickel finish.

Includes up to four colors. Additional colors, \$0.12 (A) each.

Sandblast effect with color-fill emblem, add \$0.20 (A).

Size determined by longest dimension.

Request special quote on 5,000 pieces or more and for larger sizes.

EB ENHANCEMENTS

Tru-Gold plating: Up to 1 inch, add \$0.12 (A) each.
Up to 1-1/4 inch, add \$0.14 (A) each.

Epoxy dome: Add \$0.10 (A) each.

STONES

Synthetic stones (rubies, sapphires, emeralds, white spinels) glued in: 2 to 8 pt., \$0.80 (A).

SEE PAGES 15 & 16 for unique product ideas for this process other than lapel pins as well as optional backings.



A nice presentation enhances the perceived value of the emblem. To add a 2-piece gift box, see Page 27.



Two-toned gold or silver tone finishes now available in Promo Die-Struck!

Our Lowest-Priced Emblems

- High-quality die-struck process.
- Very economical.
- Iron base metal.
- PMS color matching.
- Raised lines of metal must separate colors.
- Metal finishes available: gold or silver tone.

LOW PRICE, GREAT VALUE

Emblem with military back	250	500	1000	2500	5000
P66-X Up to 3/4 inch	1.88	1.48	1.08	0.96	0.90
1 inch	2.00	1.60	1.22	1.02	0.96
1-1/8 inch	2.06	1.64	1.26	1.12	1.04
1-1/4 inch	2.24	1.82	1.44	1.26	1.16

Includes four colors. Additional colors, \$0.12 (A) each. Size determined by longest dimension. Request special quote on 10,000 pieces or more and for larger sizes.

SET-UP CHARGES (ONE TIME)

Die: Up to 1 inch, \$100.00 (G). 1 1/4 inch, \$110.00 (G). (Waived on orders of 1,000 or more; limit one set-up charge per order.)

PRODUCTION SCHEDULE

New orders (from art approval) and reorders (from receipt of order): 20 to 23 working days
Rush service: Available preauthorized. Inquire for availability and pricing.

ART REQUIREMENTS

Computer generated art required (see *Back Cover* for acceptable formats). If unavailable, \$40.00 (C) art charge applicable.

PACKAGING

Standard: Poly bag (included in price).
Optional: See pages 26 to 27.

PREPRODUCTION SAMPLE

\$70.00 (G) and applicable tooling. Allow three weeks for production.

LESS THAN MINIMUM

For orders less than catalog quantity, add \$35.00 (C); absolute minimum, 100 pieces.

EB ENHANCEMENTS

Two-tone gold or silver finish:

Up to 1 inch, add \$0.12 (A) each.
 Up to 1-1/4 inch, add \$0.14 (A) each.

Epoxy dome: Add \$0.10 (A) each.

SEE PAGES 15 & 16 for unique product ideas for this process other than lapel pins as well as optional backings.



The die cast process can produce attractive 3-dimensional ornaments. Request special quote.

Excellent for producing unique, logoed key rings. Four styles available on Page 25.

Great for Dimensional Designs and Cut-Out Letters

- Emblems formed using steel dies and casting process.
- Zinc alloy metal.
- Great for pierced-out designs and cut-out letters.
- PMS color matching.
- Raised lines of metal must separate colors.
- Pricing includes gold or silver finish. See optional finishes in EB Enhancement section

Emblem with military back	100 -249	250 -499	500 -999	1000 -2499	2500 -4999
P78 Up to 3/4 inch	3.20	2.00	1.80	1.60	1.40
7/8 inch	3.40	2.10	1.90	1.70	1.50
1 inch	3.50	2.30	2.10	1.80	1.60
1-1/8 inch	3.70	2.50	2.30	2.00	1.80
1-1/4 inch	3.90	2.60	2.40	2.20	2.00

Includes up to four colors. Additional colors, \$0.12 (A) each. Size determined by longest dimension. Request special quote on 5,000 pieces or more and for larger sizes.

SET-UP CHARGES (ONE TIME)

Mold (simple): \$125.00 (G).
Complex or three dimensional designs:
Quoted upon review of artwork.

PRODUCTION SCHEDULE

New orders (from art approval) and reorders (from receipt of order): 20 to 23 working days.
Rush service: Available preauthorized. Inquire for availability and pricing.

ART REQUIREMENTS

Computer generated art required (see Back Cover for acceptable formats). If unavailable, \$40.00 (C) art charge applicable.

PACKAGING

Standard: Poly bag (included in emblem price).
Optional: See optional packaging and pricing on pages 26 to 27.

PREPRODUCTION SAMPLE

\$70.00 (G) and applicable tooling. Allow three weeks for production.

LESS THAN MINIMUM

For orders less than catalog quantity, add \$35.00 (C); absolute minimum, 50 pieces.

EB ENHANCEMENTS

- Tru-Gold plating: Up to 1 inch, add \$0.12 (A) each.
Up to 1-1/4 inch, add \$0.14 (A) each.
- Antique gold, silver or bronze finish:
Up to 1 inch, add \$0.10 (A) each.
Up to 1-1/4 inch, add \$0.12 (A) each.

SEE PAGES 15 & 16 for unique product ideas for this process other than lapel pins as well as optional backings.

SCREENED EMBLEMS WITH EPOXY DOMES



Die struck base piece

Combine the traditional die struck process with the flexibility of screen printing for a unique, more dimensional emblem with a higher perceived value. Contact factory for quote.



Silkscreen insert



For a Precise Registration of Color

- Logo imprinted directly on gold or silver finished metal.
- Logo printed in spot (Pantone) or four-color process.
- Great option for logos with tight color registration or small areas of detail that must show in color.
- Clear protective epoxy dome included in pricing below.



BRASS WITH GOLD OR SILVER FINISH
FOR STANDARD SCREEN PRINT - ITEM P77;
FOR FOUR-COLOR PROCESS - ITEM P71

Emblem with military back	250	500	1000	2500	5000
	-499	-999	-2499	-4999	-9999
Up to 3/4 inch	2.08	1.44	1.20	0.92	0.82
7/8 inch	2.24	1.60	1.28	1.04	0.94
1 inch	2.40	1.76	1.44	1.18	1.06
1-1/8 inch	2.64	2.00	1.66	1.38	1.26
1-1/4 inch	2.90	2.22	1.88	1.58	1.42

5A

SILVER-SCREEN PRINT
(STAINLESS STEEL SILVER FINISH ONLY)
FOR SPOT (PMS) COLORS - ITEM P77S;
FOR FOUR-COLOR PROCESS - ITEM P71S

Emblem with military back	250	500	1000	2500	5000
	-499	-999	-2499	-4999	-9999
Up to 3/4 inch	1.84	1.18	1.02	0.80	0.70
7/8 inch	1.92	1.24	1.10	0.86	0.78
1 inch	1.98	1.32	1.18	0.94	0.84
1-1/8 inch	2.12	1.46	1.30	1.08	0.96
1-1/4 inch	2.24	1.56	1.40	1.16	1.08

5A

Includes up to five colors. Additional colors, \$0.08 (A) each. Request special quote for larger quantities or larger sizes not listed. Standard or spot color screen print process works with Pantone colors only and offers a bolder or stronger presentation of colors. 4-color print process works with CMYK colors and is great for half tones or photo reproduction. Printed colors are not as bold and may be more gradient in appearance.

SET-UP CHARGES (ONE TIME)

Standard screen process: \$40.00 (G) each color.
4-color process: \$160.00 (G).
(Waived on orders of 1,000 units or more.)

PRODUCTION SCHEDULE

New orders (from art approval) and reorders (from receipt of order): 20 to 23 working days.
Rush service: Available preauthorized. Inquire for availability and pricing.

ART REQUIREMENTS

Computer generated art required (see Back Cover for acceptable formats). If unavailable, \$40.00 (C) art charge applicable.

PACKAGING

Standard: Poly bag (included in emblem price).
Optional: See optional packaging and pricing on pages 26 to 27.

PREPRODUCTION SAMPLE

\$70.00 (G) and applicable tooling. Allow three weeks for production.

LESS THAN MINIMUM CHARGE

For orders less than catalog quantity, add \$35.00 (C).
Absolute minimum - 100 pieces.

EB ENHANCEMENTS

SEE PAGES 15 & 16 for unique product ideas for this process other than lapel pins as well as optional backings.

ORIGINALITY



Deluxe Gold or Silver
Tone Cuff Links with
Made in USA
emblems only.
Add \$9.60 per pair (A)
to selected emblem pricing

Precious Metal Cuff Links in Sterling Silver
or Gold-Filled, swivel wing style, with
Made in USA emblems only.
*Due to significant market price fluctuations,
request special quote for current pricing.*



Promotional Cuff Links
with Promotional (import) emblems only.
Wing or fixed bullet style only.
Add \$4.80 (A) per pair
to selected emblem pricing



Deluxe Scalloped
Money Clip,
Gold Tone only,
add \$34.00 (C)
*to selected emblem pricing.
Emblem not included.*



Money Clip in
Gold or Silver Tone,
add \$5.00 (A)
to selected emblem pricing



Twist Lock Key Fob,
add \$2.70 (C)
to selected emblem pricing



Hat Clip with
Removable Ball
Marker,
add \$4.00 (C)
to selected emblem pricing



OPTIONAL BACKINGS



Badge Clip: Domestic
emblems, add \$1.80 (A);
Import emblems,
add \$1.40 (A)
to selected emblem pricing



Ball Marker,
add \$0.20 (A)
to selected emblem pricing



Quality Clutch,
add \$0.50 (A)
*to selected emblem pricing
(add suffix -01 to selected emblem
item #)*



Military (Butterfly) Clutch,
Included with emblems.
For additional clutch back,
add \$0.10 (A)
to selected emblem pricing



Flat Clutch,
add \$0.48 (A)
*to selected emblem pricing
(add suffix -01ft to selected emblem
item #)*



1 piece Pinback,
add \$0.44 (A)
*to selected emblem pricing
(add suffix -02 to selected
emblem item #)*



Magnetic Backing
*Only available with emblems on Pages
12 (gold or silver tone),
Page 14 (silver tone only).*

*Due to significant market price
fluctuations, request special quote
for current pricing.*



Quality Clutch Bar
and Chain,
add \$1.50 (A)
*to selected emblem pricing
(add suffix -01chain to selected
emblem #)*



Double Sided Tape,
add \$0.14 (A)
*to selected emblem pricing
(add suffix -DT to selected
emblem item #)*



Rubber Back,
add \$0.06 (A)
*to selected emblem pricing
(add suffix -RBR to selected
emblem item #)*

CHARMING



Charm Bracelet, 7"
Goldtone, \$4.20 (A)
SILVERTONE, \$3.90 (A)



Bangle Bracelet
Goldtone, \$7.70 (A)
SILVERTONE, \$6.70 (A)
Custom charm quoted separately.



Gold-Filled
Rope Link
Necklace, 18",
RLNCK-GF*

Sterling
Rope Link
Necklace, 18",
RLNCK-SS*



Wine Charms and Bookmarks
with charms in gold or silver tone. We suggest using
emblem processes from Pages 6 thru 14.
Wine Charm Wire, add \$0.20 (A)
Bookmark, add \$1.80 (A)
Beads, add \$0.16 (A) per bead
available in red, blue, green and purple.
to selected emblem pricing



Zipper Pull,
add \$0.12 (A)
*to selected emblem
pricing*



Filigree pendant
add \$8.00 (A)
*to selected emblem
pricing*



*
Due to significant fluctuations in raw material market prices, please request a special quote for current pricing. Also, see our web site at www.elliottbarry.com for more selections and additional details.

CUSTOM DOG TAGS AND DIVOT TOOLS



SDT-B



DDT



SDT-A

DOG TAGS

Screen print on brass.
Screen print on aluminum
with rubber guard, add \$0.32 (A).
Promo die struck with
two-tone finish.

DOG TAGS

RUBBER GUARD

Add \$0.32 (A) each.

SET-UP CHARGES

See "Tooling" column on pricing grid.

PRODUCTION SCHEDULE

Order (from art approval) and reorders (from receipt of order): Three to four weeks. Rush service: Available preauthorized. Inquire for availability, pricing.

PACKAGING

Poly bag (included).

PREPRODUCTION SAMPLE

\$40.00 (G) and applicable tooling. Allow two weeks for production.



P77

DIVOT TOOLS

Antique bronze with screen print ball marker insert.
Antique bronze with die-struck ball marker insert.
Antique silver with die-struck ball marker insert.
Note: Divot tool size is 3 1/4-inches tall.



P66



P66

Dog tags					Tooling	
	100 -249	250 -499	500 -999	1000 -2499	per side	2nd side
SDT-A Screen print on aluminum, silver finish	2.80	2.60	2.40	2.10	per color 40.00	0.28
SDT-B Screen print on brass, gold finish	4.80	4.60	4.20	3.80	per color 40.00	0.28
DDT Promo die struck, gold or silver finish	4.30	4.00	3.70	3.30	150.00	0.40
				4A	G	A

Pricing based on standard size 2x 1-1/4 inches and includes 30-inch gold tone or silver tone bead chain. Pricing includes up to four colors. Additional colors, \$0.12 (A) each. Request special quote for larger or smaller sizes.

DIVOT TOOLS WITH REMOVABLE CUSTOM MAGNETIC BALL MARKERS

Divot tool finishes: Gold, nickel silver, or antiqued in bronze or silver.

Ball marker finishes: Antiqued in bronze, silver or gold

Brass	50 -99	100 -249	250 -499	500 -999	Tooling Charge
P66-Divot tool Die-struck ball marker with divot tool	8.40	7.60	6.70	6.20	100.00
P77-Divot tool Screen print ball marker with divot tool	8.90	8.10	6.70	6.40	per color 40.00
				4A	G

Includes up to four colors. Additional colors, \$0.12 (A) ea.

OPTIONS

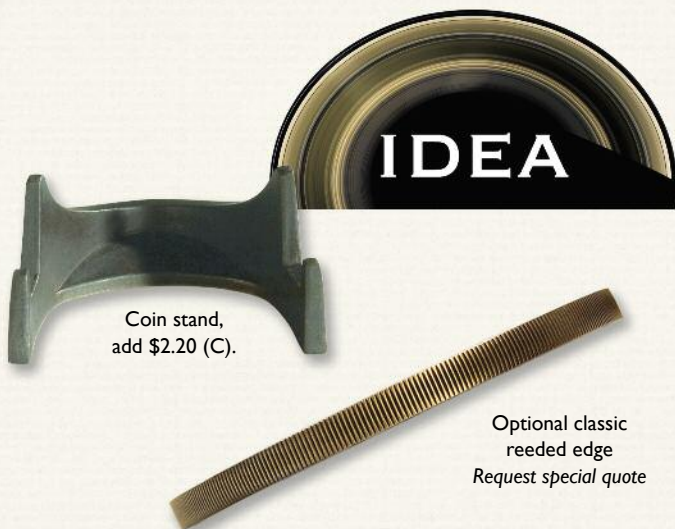
Epoxy dome: Included in screen print pricing. For die-struck ball marker, add \$0.10 (A).

Die-striking and die-casting give unparalleled dimension to heavyweight coins, ideal for awards

Custom award and commemorative coins have been a tradition that has spanned centuries. Coins can be used as a versatile tool for any organization. Not only can they promote pride, they can also be used as a valuable marketing tool. Combine your customer's logo with our expert craftsmanship, and the result is a long-lasting token of an organization's message or an individual's outstanding accomplishment.

PRICING

Many variables exist that impact the pricing of coins. Fluctuating metal market prices, final size and thickness, and finish all have an impact on pricing. We encourage special quotes for all coin orders to ensure that we offer the best options and price. Below is some guideline pricing for example sizes and thicknesses.



DIE-STRUCK IN SOLID BRASS

- Highest quality in appearance and durability
- Heavier in weight
- Available in sizes up to 2.5 inches
- More finish options available
- Limited thickness available.

TWO-SIDED, 2-DIMENSIONAL DESIGNS

Two-Sided Size	Thickness	Tooling	100 -249	250 -499	500 -999
1-1/4 inch	2.6 mm	190.00	4.20	3.60	3.20
1-1/2 inch	3.0 mm	200.00	6.10	5.30	4.70
1-3/4 inch	3.2 mm	240.00	7.40	6.50	6.00
G					3A

DIE-CAST ZINC ALLOY

- More economical process
- Great option for 3D designs
- Available in sizes up to 4 inches
- More thickness options available

TWO-SIDED, 2-DIMENSIONAL DESIGNS

Two-Sided Size	Thickness	Tooling	100 -249	250 -499	500 -999
1-1/4 inch	up to 3.0 mm	240.00	4.00	3.10	2.90
1-1/2 inch	up to 3.4 mm	290.00	4.60	3.40	3.20
1-3/4 inch	up to 3.8 mm	320.00	5.00	3.70	3.50
G					3A

3-DIMENSIONAL DESIGNS

Please request special quote for 3-dimensional designs.

FINISH OPTIONS

- Color: up to 4 PMS colors, add \$0.28 (A) per side.
- Gold or silver finish: No additional charge.
- Antique silver finish: add \$0.40 (A).
- Sandblast (satin) finish: add \$0.30 (A) per side.
- Special gold/silver finish: Request quote.
- Epoxy dome: add \$0.22 (A) per side.

PACKAGING

- Standard: Poly bag (included in price).
- Optional: Inquire.

SPECIAL SIZES, LARGER QUANTITIES

Request special quote on sizes not listed above and quantities of 1,000 pieces or more.

PREPRODUCTION SAMPLE

\$70.00 (G) and applicable tooling. Allow 13-15 working days.

PRODUCTION SCHEDULE

20 to 25 working days from approval of artwork.

LESS THAN MINIMUM CHARGE

Inquire about availability.

METAL THICKNESS

Available thickness options are noted in the pricing grid. Refer to illustration below for size reference. Inquire for availability and pricing of other metal thicknesses.



COINED



NEW! Challenge coin bottle opener.
Request special quote.

NEW! Coin with removable ball marker.
Request special quote.



IDEAS



Spiral cut edge

Diamond cut edge



4-color process insert

DECORATED



Heavyweight medallions to award on a colorful or imprinted ribbon

The same great benefits as a custom coin, but with the added feature of a large charm ring so that pieces can be presented as a special award to a recipient, or attached to findings so the marketing message or note of accomplishment can be used and seen on a daily basis.

PRICING

Many variables exist that impact the pricing. Fluctuating metal market prices, final size and thickness, and finish all have an impact on pricing. We encourage special quotes for all coin orders to ensure that we offer the best options and price. Below is some guideline pricing for example sizes and thicknesses.

ATTACHMENT OPTIONS

- Neck ribbons: 32"x7/8" wide, \$1.00 (C) each.
32"x1-1/2" wide, \$1.40 (C) each.
- Drape ribbons: \$0.90 (C) each.
- Ribbon for wine bottle medallion: add \$0.80 (C) each.



DIE-STRUCK IN SOLID BRASS

- Highest quality in appearance and durability
- Heavier in weight
- Available in sizes up to 2.5 inches
- More finish options available
- Limited thickness available.

ONE-SIDED, 2-DIMENSIONAL DESIGNS

Size	Thickness	Tooling	100 -249	250 -499	500 -999
1-1/4 inch	2.0 mm	110.00	3.90	3.30	2.90
1-1/2 inch	2.6 mm	120.00	5.80	5.00	4.10
1-3/4 inch	3.0 mm	140.00	6.90	6.10	5.40
G					3A

DIE-CAST ZINC ALLOY

- More economical process
- Great option for 3D designs
- Available in sizes up to 4 inches
- More thickness options available

ONE-SIDED, 2-DIMENSIONAL DESIGNS

Size	Thickness	Tooling	100 -249	250 -499	500 -999
1-1/4 inch	up to 2.4 mm	200.00	3.70	2.60	2.20
1-1/2 inch	up to 3.0 mm	248.00	4.10	3.05	2.70
1-3/4 inch	up to 3.5 mm	260.00	4.80	3.20	3.00
G					3A

3-DIMENSIONAL & TWO-SIDED DESIGNS

Please request special quote for 3-dimensional designs and for imprints on 2nd side.

FINISH OPTIONS

- Color: up to 4 PMS colors, add \$0.28 (A).
- Gold or silver finish: No additional charge.
- Antique silver finish: add \$0.40 (A).
- Sandblast (satin) finish: add \$0.30 (A) per side.
- Special gold/silver finish: Request quote.
- Epoxy dome: add \$0.22 (A).

PACKAGING

- Standard: Poly bag (included in price).
- Optional: Inquire.

SPECIAL SIZES, LARGER QUANTITIES

Request special quote on sizes not listed above and quantities of 1,000 pieces or more.

PREPRODUCTION SAMPLE

\$70.00 (G) and applicable tooling. Allow 13-15 working days.

PRODUCTION SCHEDULE

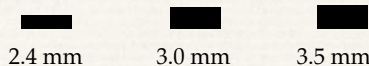
20 to 25 working days from approval of artwork.

LESS THAN MINIMUM CHARGE

Inquire about availability.

METAL THICKNESS

Available thickness options are noted in the pricing grid. Refer to illustration below for size reference. Inquire for availability and pricing of other metal thicknesses.



2.4 mm 3.0 mm 3.5 mm

DIE-STRUCK
AND DIE-CAST
MEDALLIONS





IN-STOCK AND READY TO GO



GENERAL INFORMATION

Pins sold as shown. In some cases optional finishes are available. Please inquire. Also request special pricing and production schedule for larger quantities than priced.

PACKAGING

Poly bag.

DELIVERY

In most cases orders can ship in one to three business days from receipt of order. Check availability when ready to place an order.



See our complete line of stock emblems at www.elliottbarry.com

MOTIVATIONAL DIE STRUCK

Motivational Die Struck	25 -49	50 -99	100 -499	500 -999	1000
	3.40	3.00	2.30	2.20	2.00

5A



TEAMWORK EMBLEMS

Teamwork Emblems	25 -49	50 -99	100 -499	500 -999	1000
	2.80	2.00	1.40	1.10	1.00

5A

MOTIVATIONAL KEYTAGS

Key tags	25 -49	50 -99	100 -499	500 -999	1000
Die-struck antique	3.30	2.90	2.10	1.80	1.60

5A





JEWELED

Jeweled	25 -49	50 -99	100 -499
Die-struck with color	3.50	3.00	2.60
			3A

Custom jeweled award pins available. Call our Pin Consultants for a quote.



You can add engraving to many of our stock emblems, showing hours or years of service.

RECOGNITION DIE STRUCK

Recognition Die Struck	25 -49	50 -99	100 -499	500 -999	1000
	3.40	3.00	2.30	2.20	2.00
					5A

* **ENGRAVED PANEL** with up to 2 characters, add 1.40 (C) and five to ten days for delivery. Add \$0.50 (C) for each additional character engraved.



PATRIOTIC & INSPIRATIONAL

American flag pin	25 -49	50 -99	100 -499	500 -999	1000
	2.00	1.80	1.00	0.80	0.70
					5A

Patriotism and inspiration	25 -49	50 -99	100 -499	500 -999	1000
	3.30	2.50	1.80	1.60	1.50
					5A

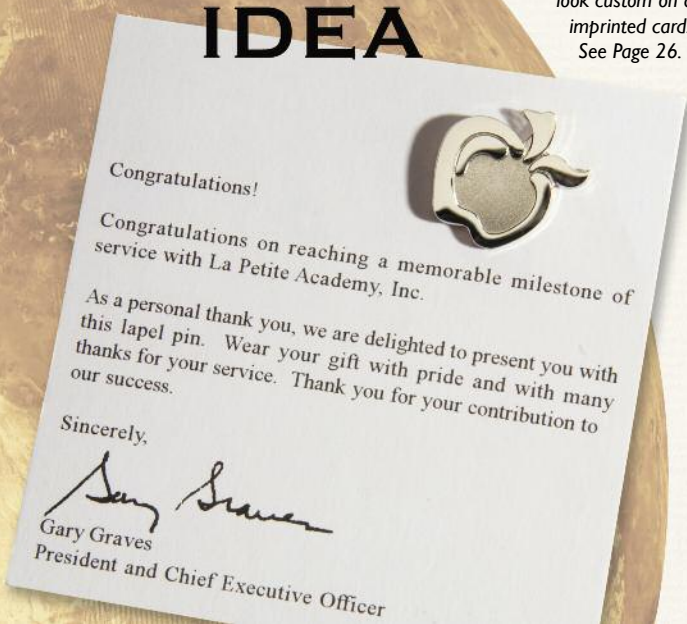
A stock emblem can look custom on an imprinted card. See Page 26.

IDEA



RIBBONS FOR GOOD CAUSES

Ribbons for good causes	25 -49	50 -99	100 -499	500 -999	1000
	3.30	2.60	2.00	1.60	1.40
					5A



SYMBOLISM

IN-STOCK AND
READY TO GO



CREATIVELY SYMBOLIC

	25 -49	50 -99	100 -499	500 -999	1000
Stock theme emblems (gold finish)	3.30	2.50	1.80	1.60	1.50
Senior Class key ring (silver finish)	7.00	6.40	5.90	5.30	4.90

5A

CUSTOM KEY TAGS



DIE-STRUCK IN SOLID BRASS

- Top-of-the-line quality
- Very durable

Item #	Size	Tooling	100	250	500
			-249	-499	-999
P1611	1-1/4 inch	110.00	4.10	3.60	3.20
P1611	1-1/2 inch	120.00	5.80	4.40	4.00
P1611	1-3/4 inch	140.00	6.80	5.80	5.40
G					3A

DIE-CAST ZINC ALLOY

- Creative option for unique and cut-out shapes
- Economically priced

Item #	Size	Tooling	100	250	500
			-249	-499	-999
P7811	1-1/4 inch	210.00	3.90	2.80	2.40
P7811	1-1/2 inch	260.00	4.20	3.00	2.80
P7811	1-3/4 inch	280.00	4.80	3.20	3.00
G					3A

All pricing above includes: ONE-SIDE IMPRINT - 2D, standard 32mm split key ring, up to 2mm thickness. In bright gold, silver or antique bronze finish. Please inquire for special quote on larger sizes, larger quantities and 2-sided designs.

METAL FINISH AND COLOR OPTIONS

Antique silver finish: add \$0.40 (A).
 Sandblast background: add \$0.30 (A).
 Epoxy dome: add \$0.22 (A).
 Color: add \$0.12 (A) per color.

PACKAGING

Standard: Poly bag (included in price).
 Optional: See pages 26 and 27.

PRODUCTION SCHEDULE

20 to 25 working days from approval of artwork.



PRESENTATION



IMPRINTED CARDS

Imprinted cards are excellent for reaffirming or expanding the message of your lapel pin. Many options are available.

Inquire with your specifications, and our Pin Consultants will provide pricing.

SUEDE POUCHES

for pins and accessories 2 x 3"

		<500	500 -2499	2500
166G	Green	0.70	0.65	0.60
166BLCK	Black	0.70	0.65	0.60
166RB	Royal Blue	0.70	0.65	0.60
166	Red	0.70	0.65	0.60
				3C

PLASTIC GIFT BOXES

with foam liners

		<500	500 -2499	2500
Small box 1.25 x 1.25"				
173BLCK	black	0.80	0.75	0.70
173BL	dark blue	0.80	0.75	0.70
Medium box 1.625 x 2.125"				
174BLCK	black	0.85	0.80	0.75
Large box 2.875 x 2"				
177BLCK	black	1.40	1.30	1.20
Extra large box 4.625 x 3.5"				
178BLCK	black	2.40	2.25	2.05
				3C

DELUXE PACKAGING



LEATHERETTE BOXES

1.75 x 1.5" Includes 2-piece white outer box

		<100	100 -499	500
176DG	Grey	4.95	4.60	4.20
176LG	Light grey	4.95	4.60	4.20
3C				

SUPREME VELVET GIFT BOXES

Includes white outer sleeve

		<100	100 -499	500
Small box 1.8 x 2.125"				
167BLCK	black	2.50	2.25	1.90
167BL	blue	2.50	2.25	1.90
167LG	grey	2.50	2.25	1.90
Large box 3.375 x 2.625"				
168BLCK	black	3.00	2.85	2.50
168BL	blue	3.00	2.85	2.50
3C				



2-PIECE GIFT BOXES

		<100	100 -499	500
180BLCK	1.875 x 1.875"	1.10	1.00	0.90
170DRKBLUE	1.875 x 1.875"	1.10	1.00	0.90
180WHITE	1.875 x 1.875"	1.10	1.00	0.90
3C				

IMPRINTING OPTION

(Available only on 2-piece cardboard boxes and velvet boxes)

Method: Foil stamp, all standard colors available.

SET-UP CHARGES (ONE TIME)

\$70.00 (G).

ART REQUIREMENTS

Computer generated art required (see Back Cover for acceptable formats). If unavailable, \$40.00 (C) art charge is applicable.

RUNNING CHARGE (PER IMPRINT)

Less than 50: \$0.50 (A).
50 or more: \$0.30 (A).



CREATIVE DESIGN SERVICES

Translating a trademark or logo into a beautiful piece of jewelry may require the assistance of a skilled artist to create and design an idea. Our art department can transform a client's logo into an effective jewelry design, from instructions and suggestions by the client. Black-and-white layout, \$40.00 (C). Computer-generated colored art, \$60.00 (C).

COMPUTER GENERATED ART

Computerized art is accepted via email or disk. Preferred file and format types are CorelDRAW®.cdr or Adobe® Illustrator®.ai or .eps. Bitmap files are acceptable but subject to additional art charge of \$40.00 (C). Fonts must be included unless type is converted to curves or outlines.

OVERRUNS/UNDERRUNS

All custom products manufactured are subject to a 5% overrun or underrun. The exception to this is our precious metals. Every effort will be made to ship exact quantities on all other products. If an exact quantity is mandatory, it must be specified when the order is placed.

TOOLING COSTS

The tooling costs quoted in this catalog represent the cost for a simple design. Oversized and sculptured dies or molds will be quoted by the factory after artwork is reviewed. All tooling is billed at factory cost and shall remain property of Elliot-Barry Company. All domestic dies and molds will be kept on file for a period of five years. Tooling for imported emblems will be maintained for a period of three years.

TERMS

Inquire for details.

SHIPPING

All shipments are F.O.B. Colorado factory and routed via UPS or FedEx unless otherwise specified. Shipments are prepaid and normally invoiced at the time of shipment.

TRADEMARKS

Elliot-Barry assumes distributors are authorized to use trademarks presented for reproduction. We assume no liability in trademark or copyright disputes.

PRICES

This catalog supersedes previous catalogs and price lists. The factory reserves the right to correct pricing errors in the catalog.

Pricing is based on current market rates of metals used to produce emblematic products. Precious metals fluctuate directly with prevailing market rates at date of order. See explanation of pricing fluctuations on pages 4-5. Emblems produced in non-precious metals are priced at the present market rates of brass and copper. Historically the cost of these metals has been stable. However, in the past year a significant increase in market price has been experienced as demand of metals has exceeded supply. If market pricing for these metals continues to increase at a significant rate, the factory reserves the right to adjust pricing during the year to reflect increases in raw materials cost.

CorelDRAW® is a registered trademark of Corel Corporation or Corel Corporation Limited in Canada, the United States and/or other countries. Adobe® and Illustrator® are registered trademarks of Adobe Systems Incorporated in the United States and/or other countries.

www.elliottbarry.com



© 2017 Elliot-Barry Co.